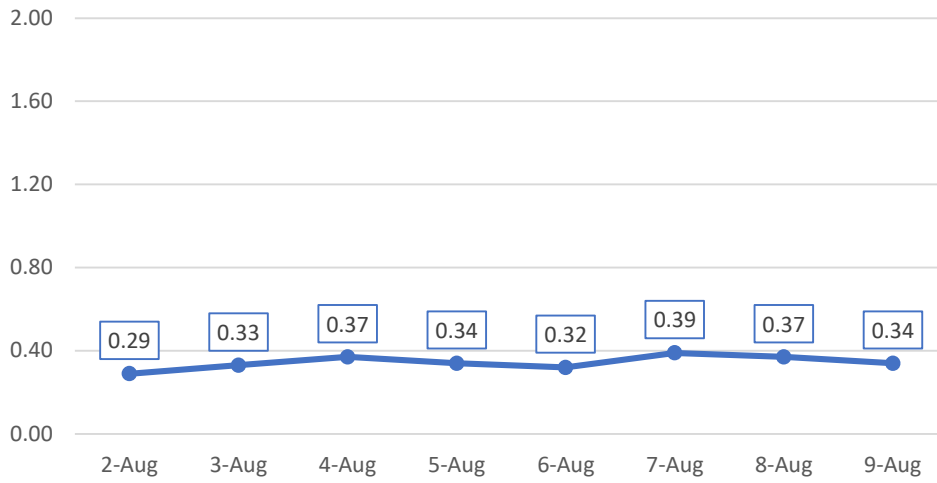
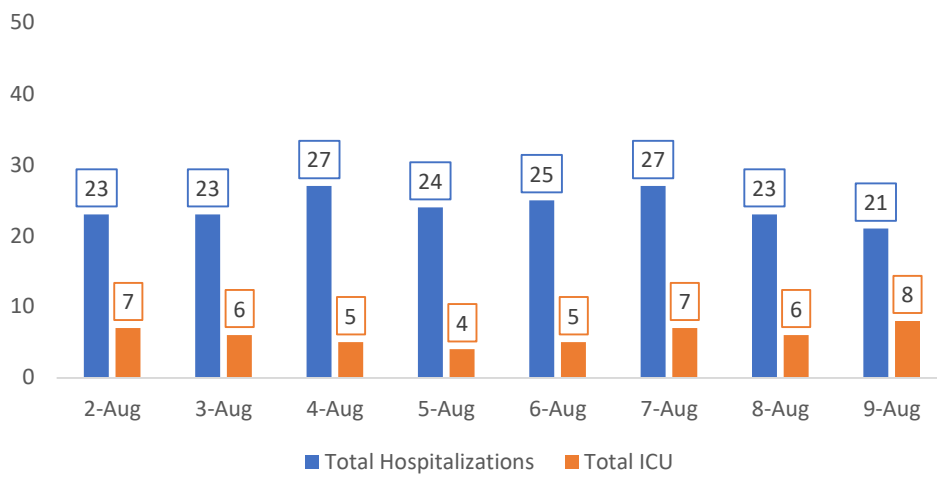


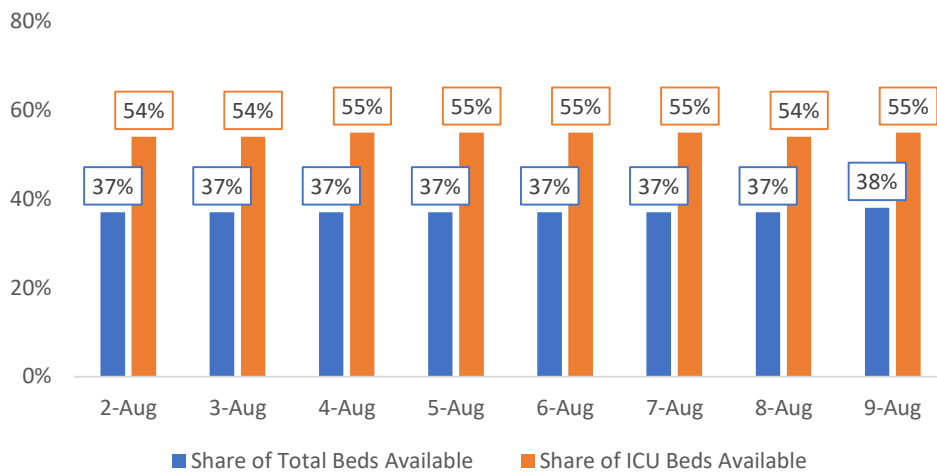
New Hospitalizations per 100k: 7-Day Rolling Avg



Hospitalizations

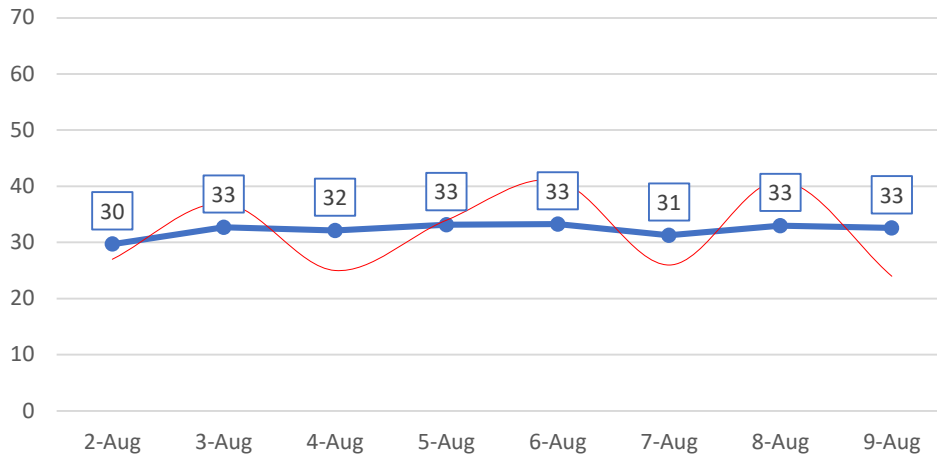


Available Hospital Capacity: 7-Day Rolling Avg

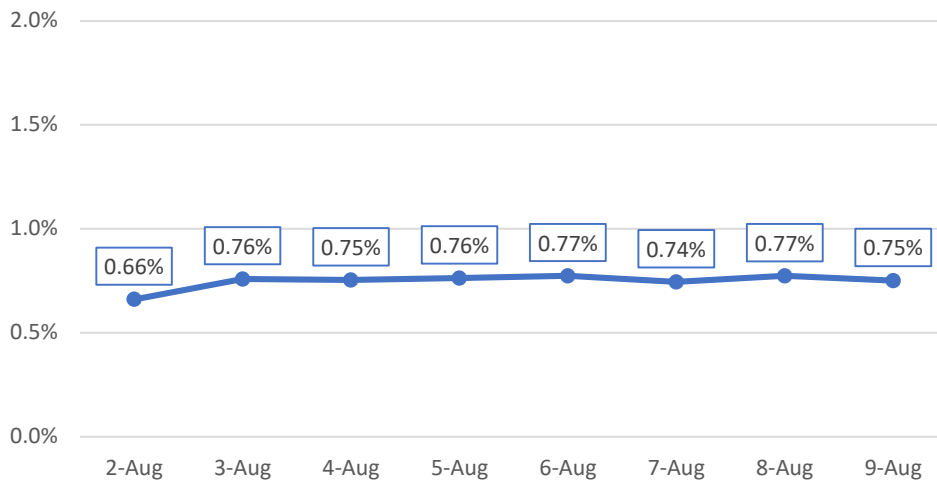


New Positives: 7-Day Rolling Avg

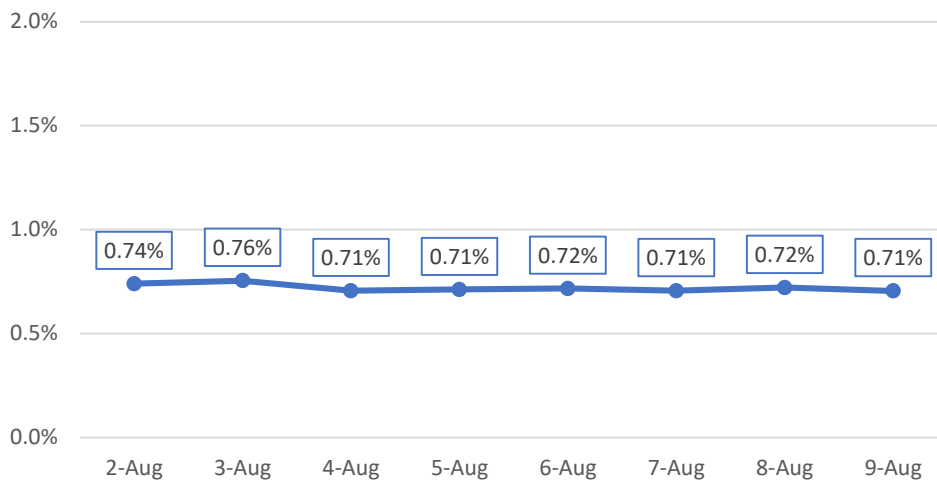
(Actual Daily Count Shown in Red)



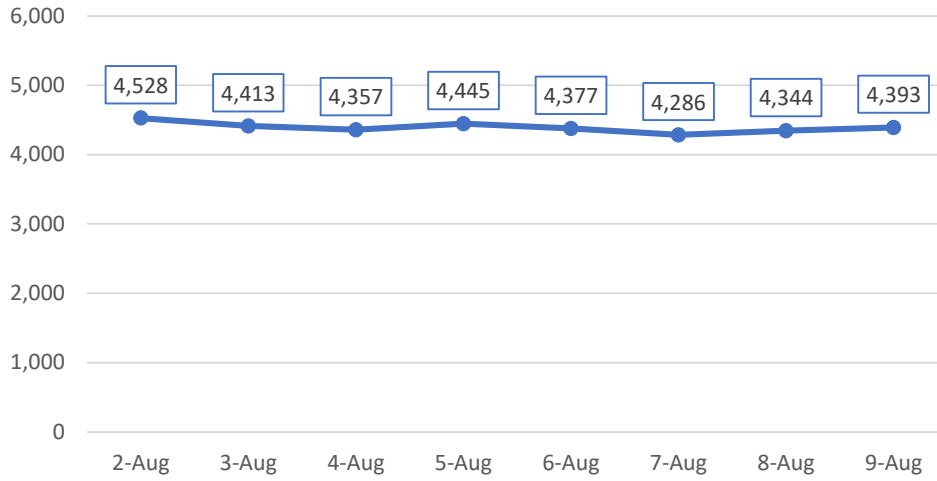
% New Test Positives: 7-Day Rolling Avg



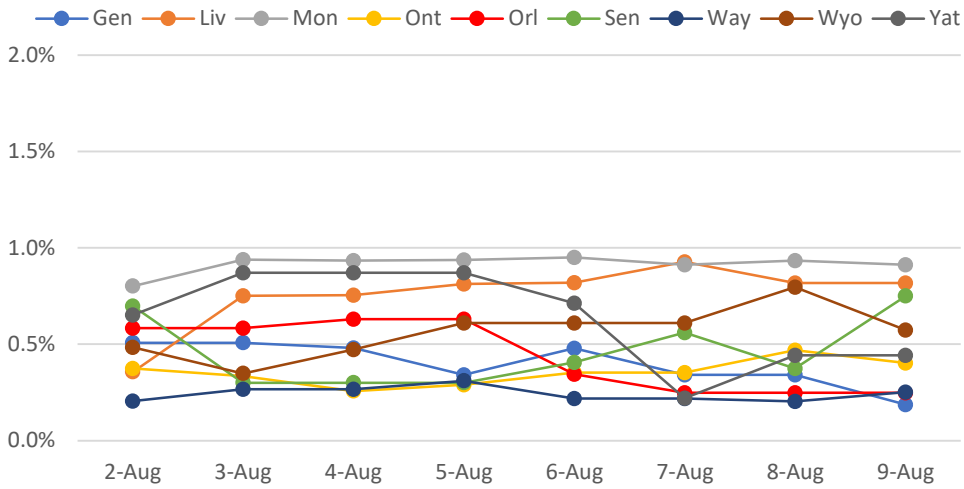
% New Test Positives: 14-Day Rolling Avg



Test Volume: 7-Day Rolling Avg

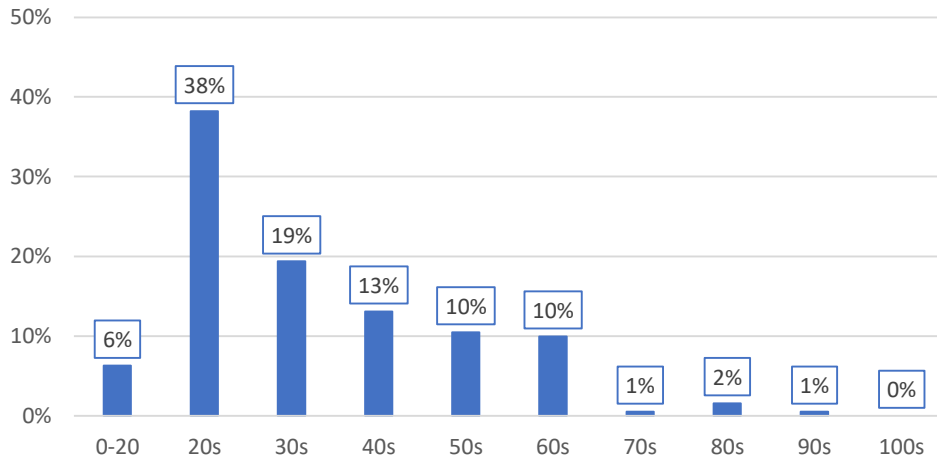


% New Test Positives: 7-Day Rolling Avg



Share of New Positives by Age Group

(Past Seven Days, Monroe County only)



ROC COVID-19

**Week of
July 27th**

0.94%

**reporting
symptoms**

(88k screens)

**Week of
August 3rd**

0.94%

**reporting
symptoms**

(87k screens)