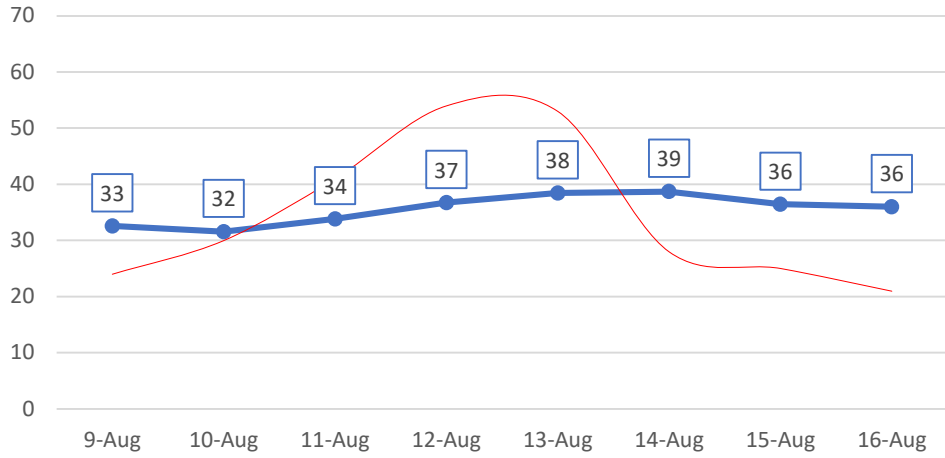
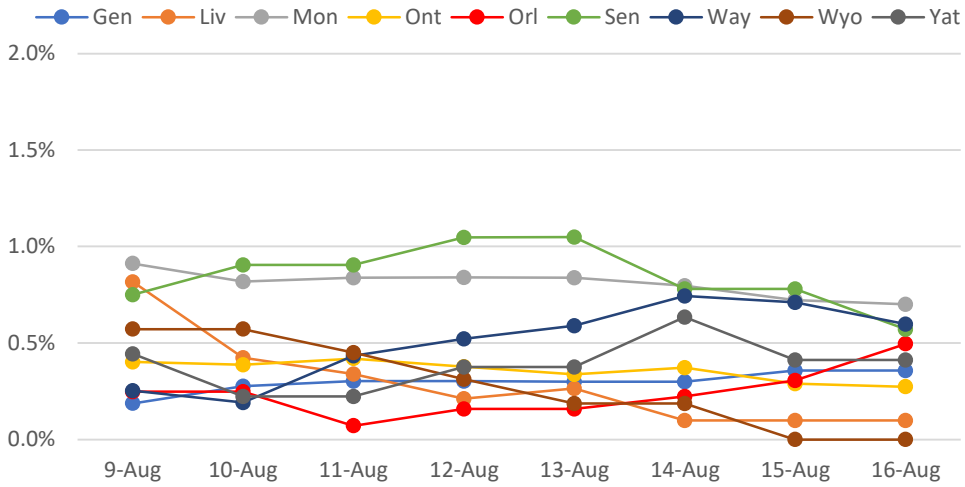


### New Positives: 7-Day Rolling Avg

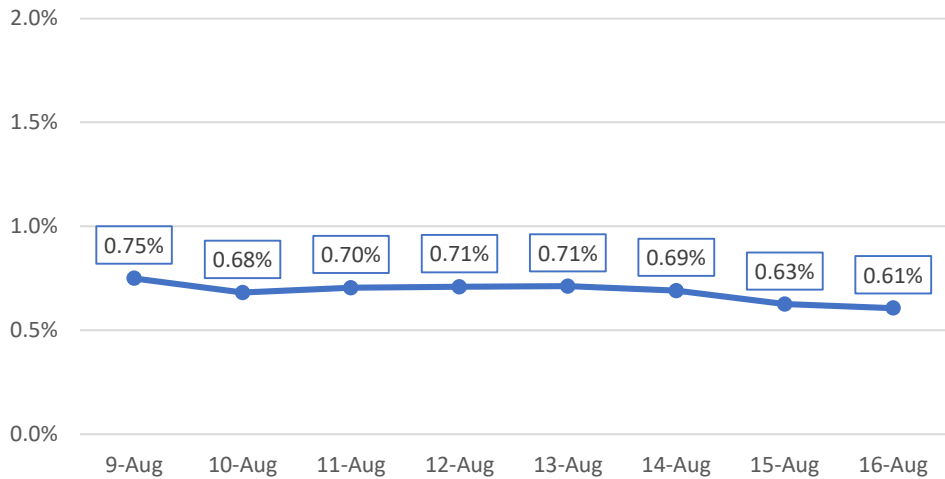
(Actual Daily Count Shown in Red)



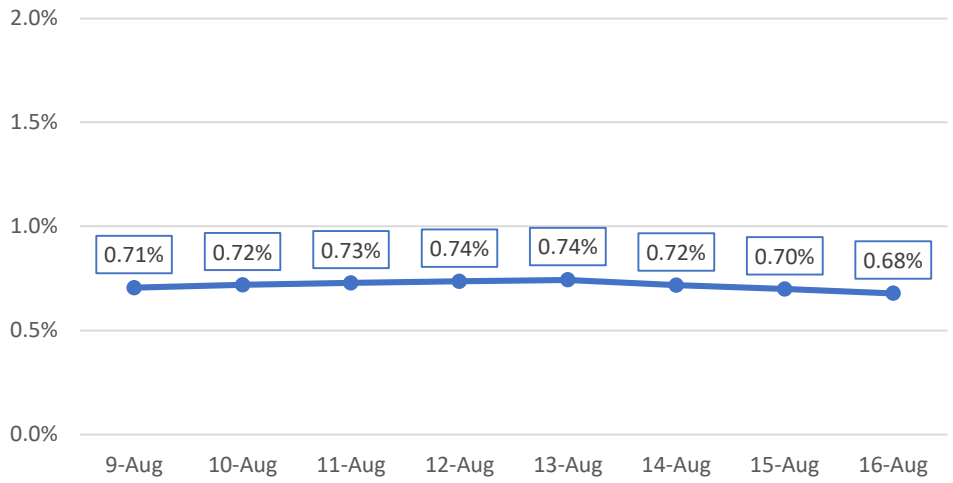
### % New Test Positives: 7-Day Rolling Avg



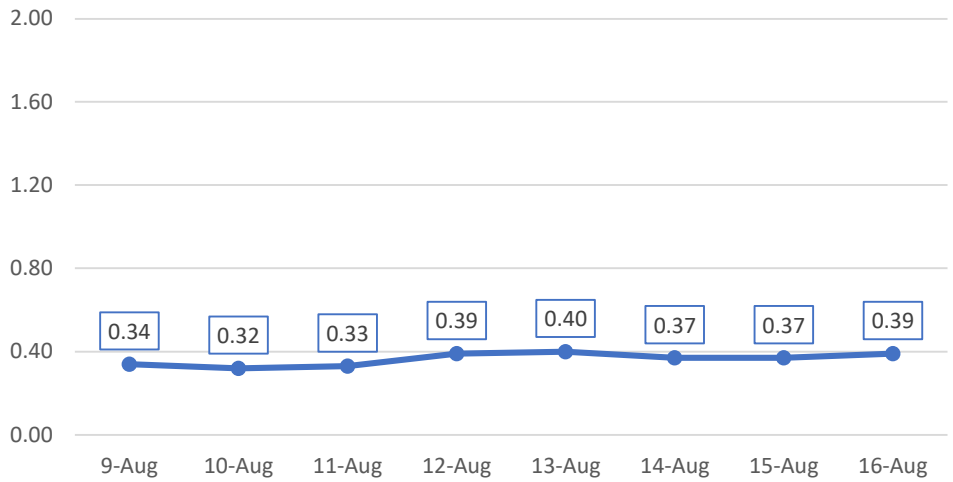
### % New Test Positives: **7-Day** Rolling Avg



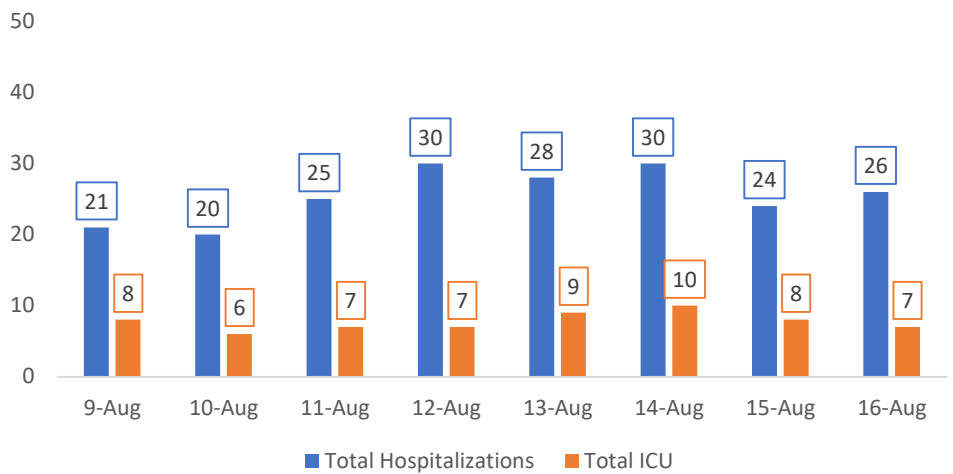
### % New Test Positives: 14-Day Rolling Avg



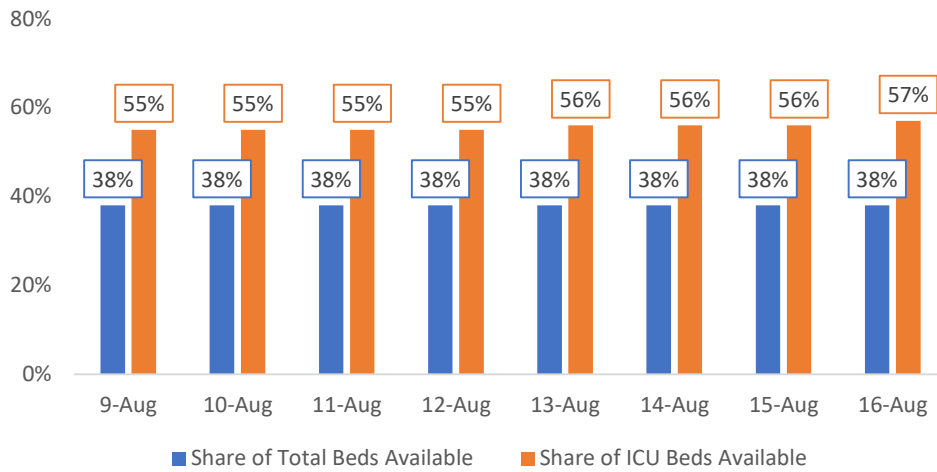
### New Hospitalizations per 100k: 7-Day Rolling Avg



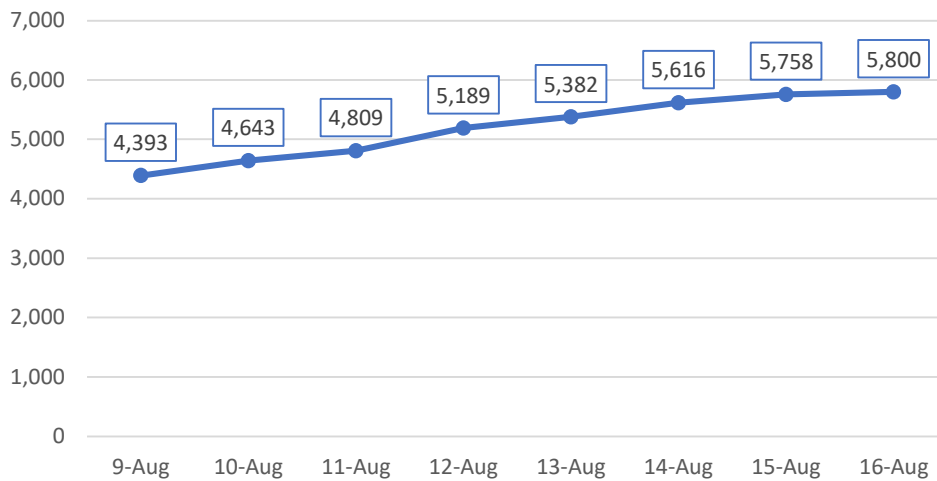
### Hospitalizations



### Available Hospital Capacity: 7-Day Rolling Avg

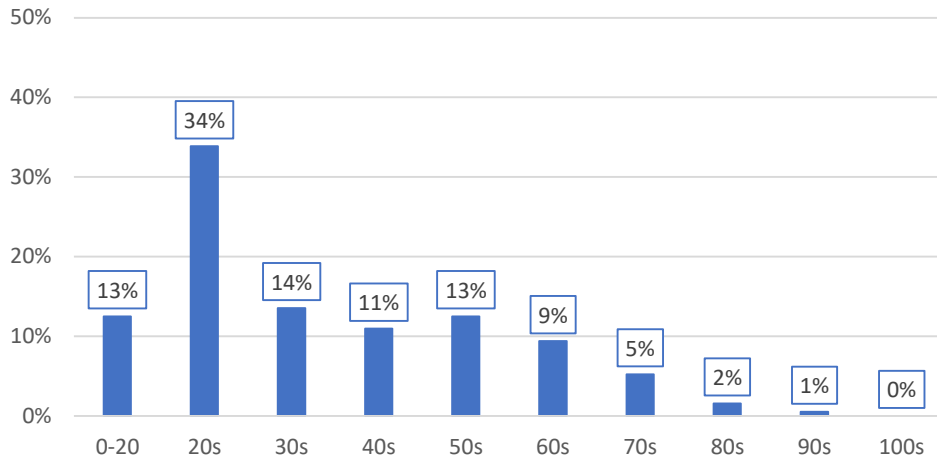


### Test Volume: 7-Day Rolling Avg



### Share of New Positives by Age Group

(Past Seven Days, Monroe County only)



**ROC** COVID-19

**Week of  
August 3rd**

**0.94%**

**reporting  
symptoms**

**(87k screens)**

**Week of  
August 10th**

**0.92%**

**reporting  
symptoms**

**(85k screens)**