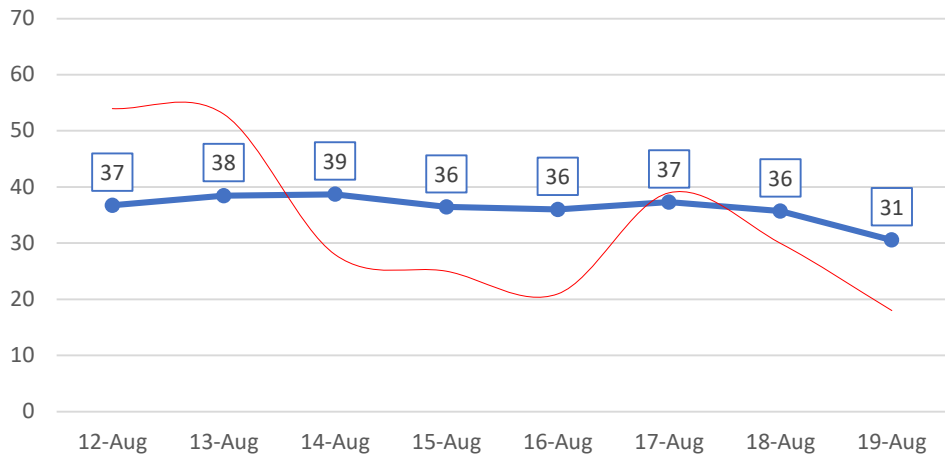
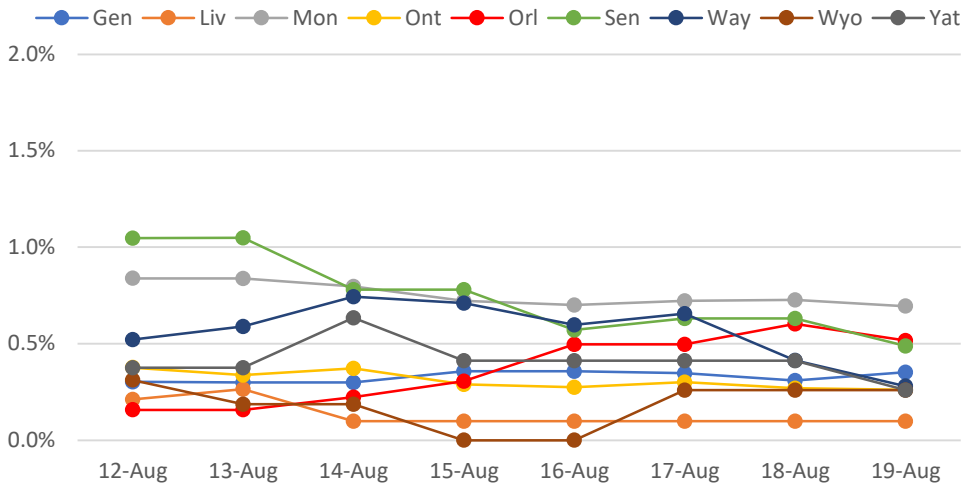


New Positives: 7-Day Rolling Avg

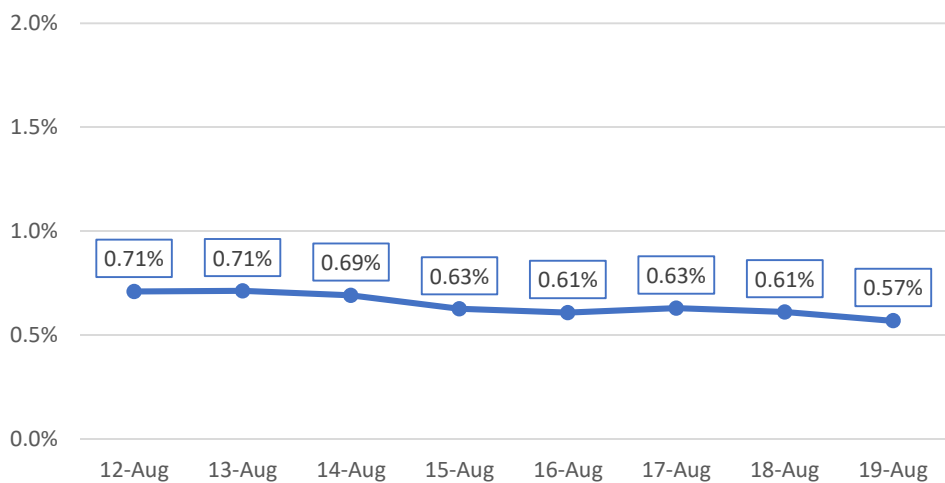
(Actual Daily Count Shown in Red)



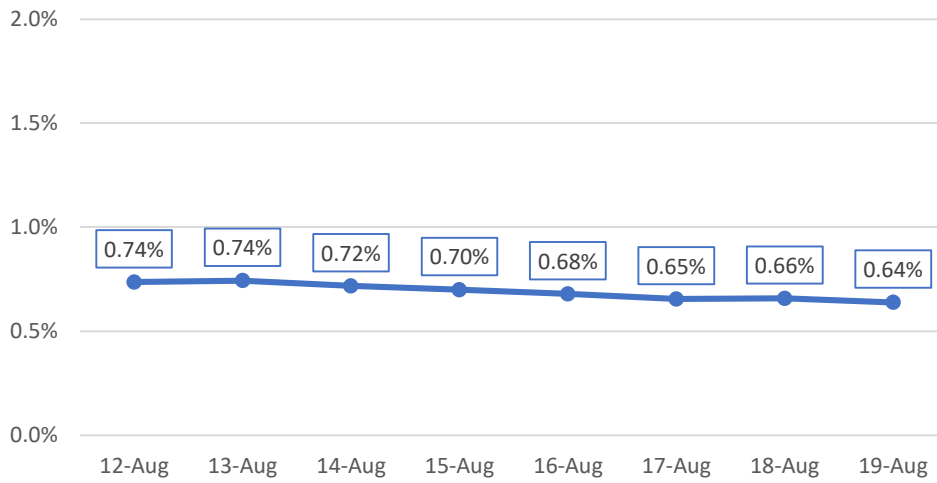
% New Test Positives: 7-Day Rolling Avg



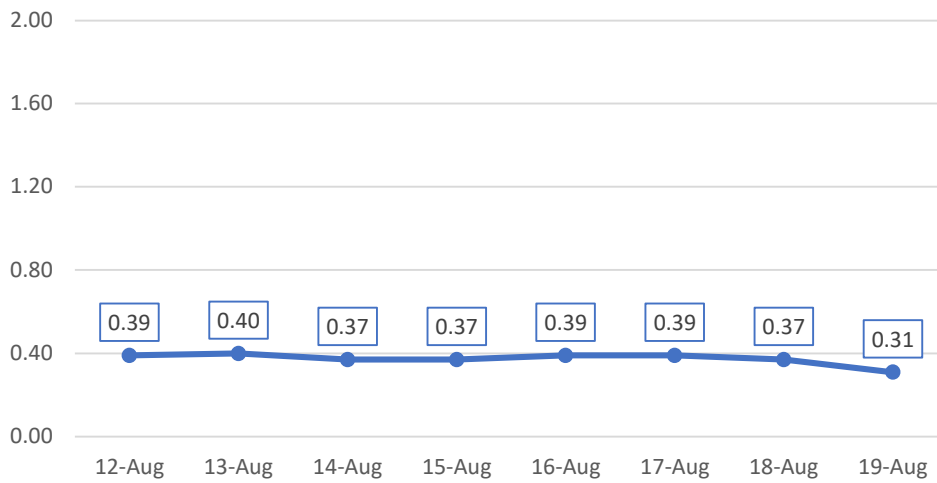
% New Test Positives: **7-Day** Rolling Avg



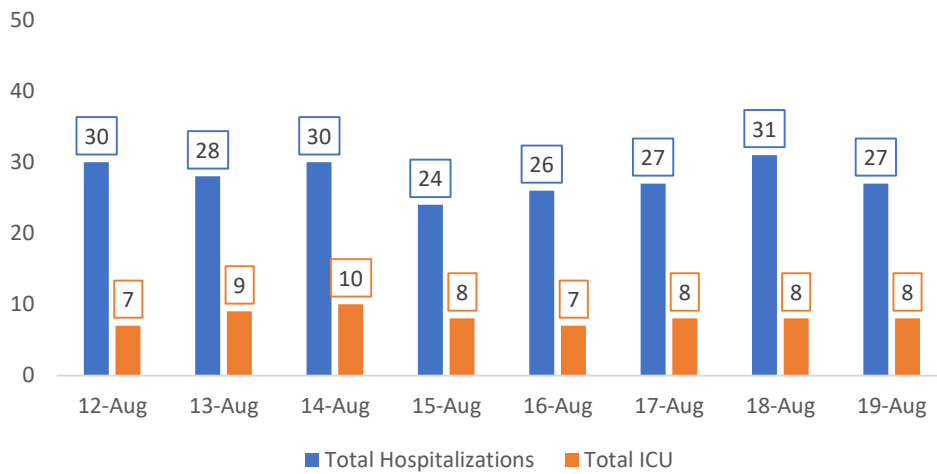
% New Test Positives: 14-Day Rolling Avg



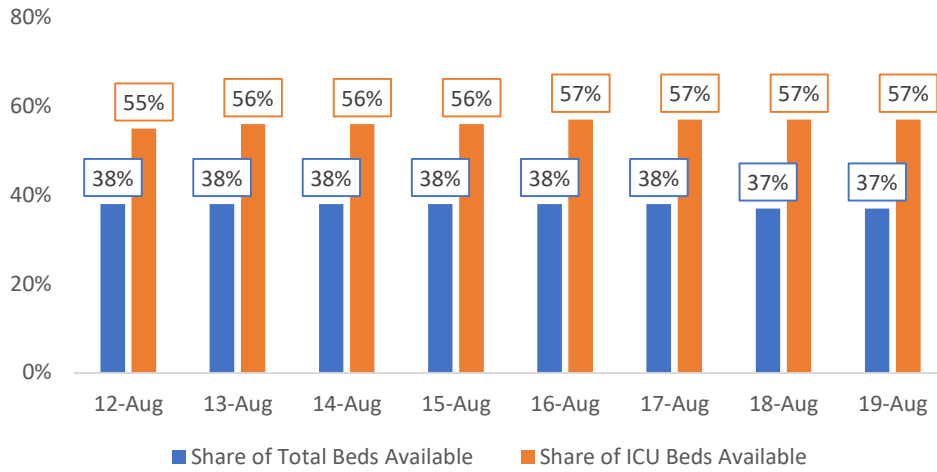
New Hospitalizations per 100k: 7-Day Rolling Avg



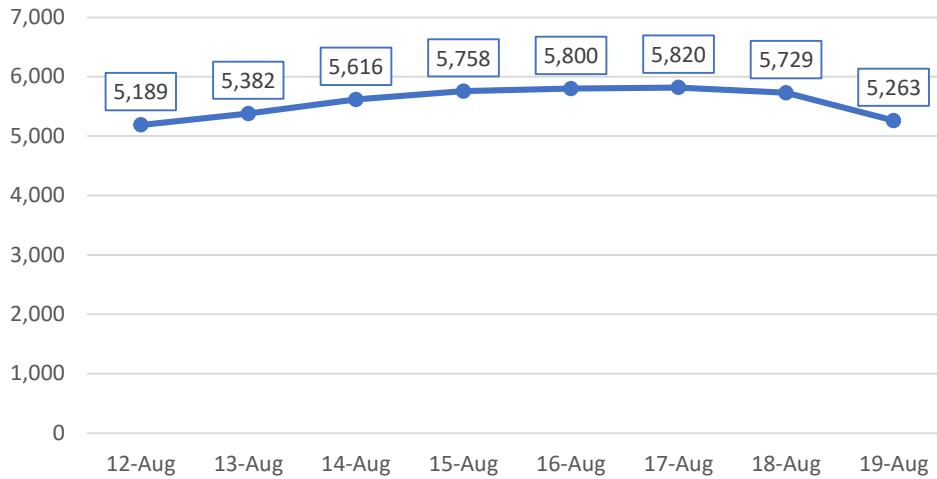
Hospitalizations



Available Hospital Capacity: 7-Day Rolling Avg

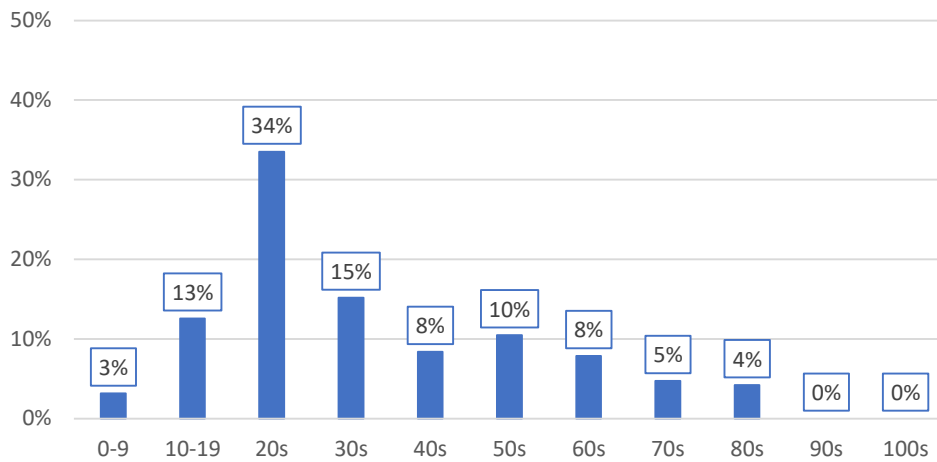


Test Volume: 7-Day Rolling Avg



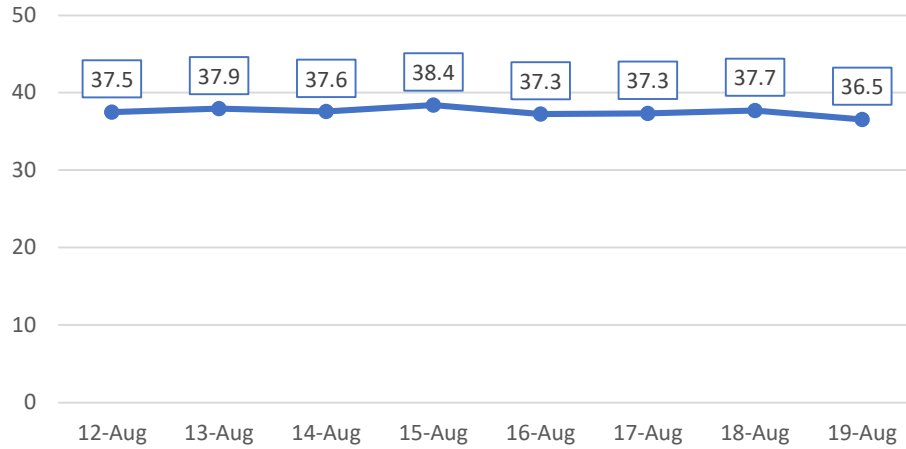
Share of New Positives by Age Group

(Past Seven Days, Monroe County only)



Median Age of New Positives: 7-Day Rolling Avg

(Monroe County only; Estimated based on 10-year age cohorts)



**Week of
August 3rd**
0.94%
reporting
symptoms
(87k screens)

**Week of
August 10th**
0.92%
reporting
symptoms
(85k screens)