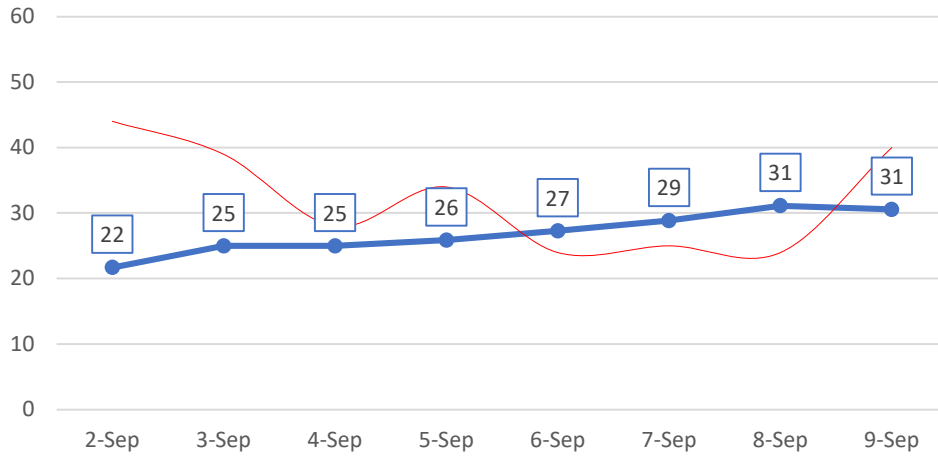
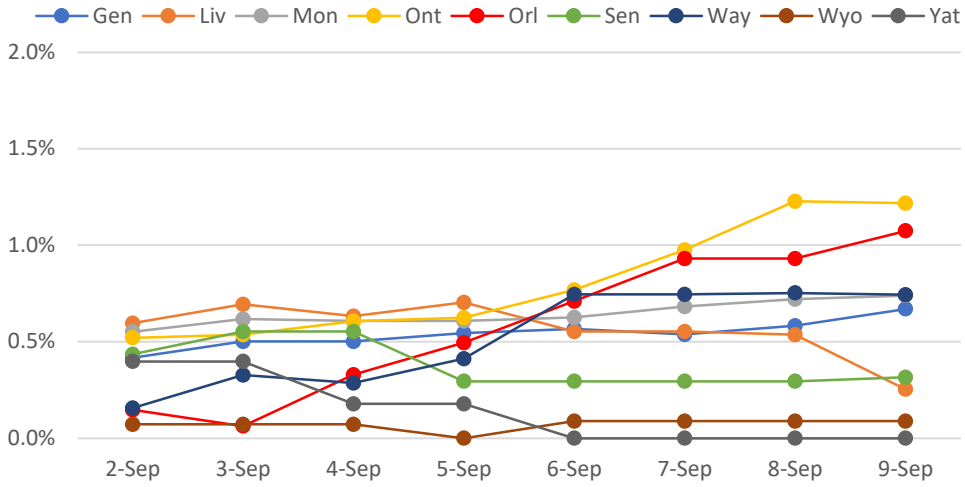


New Positives: 7-Day Rolling Avg

(Actual Daily Count Shown in Red)

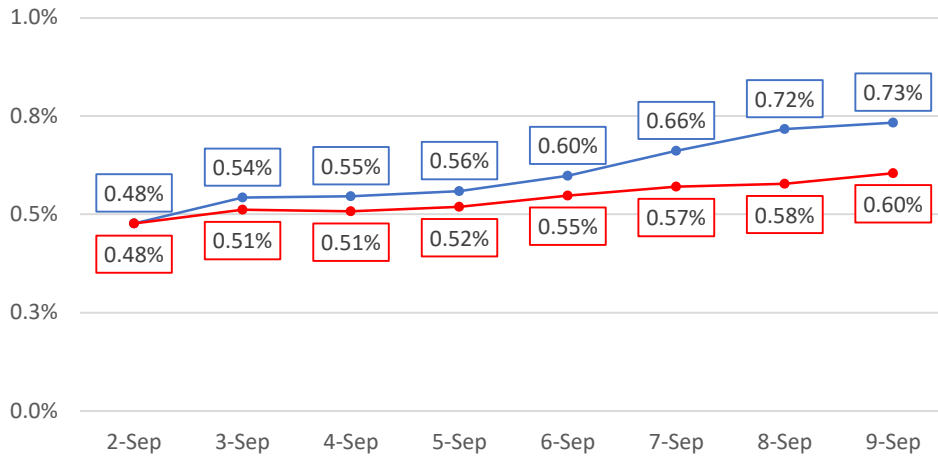


% New Test Positives: 7-Day Rolling Avg

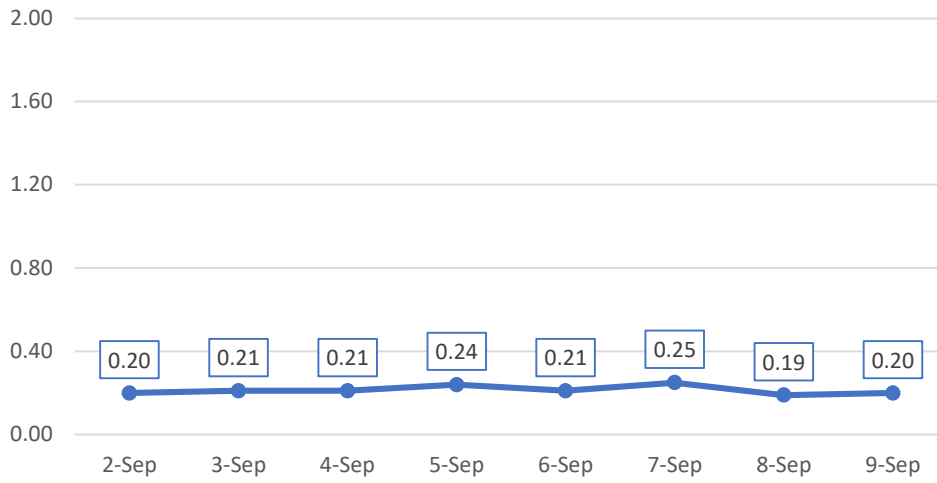


% New Test Positives: Rolling Avg

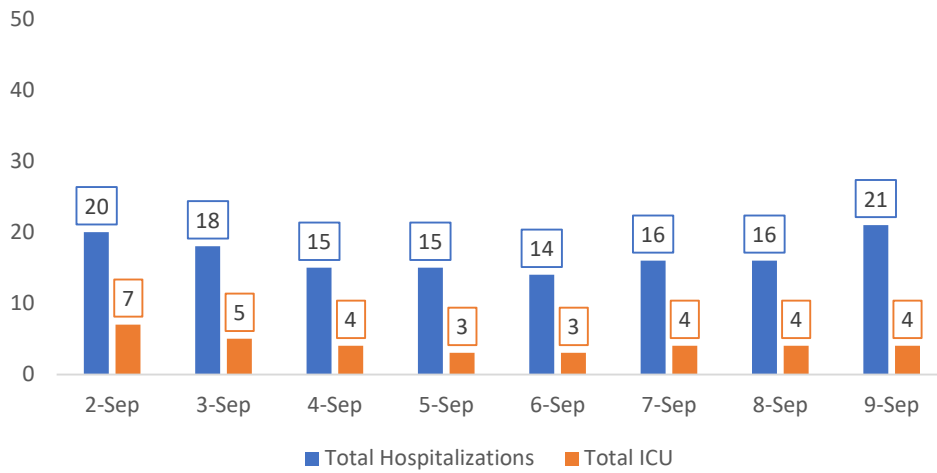
7-Day in BLUE, 14-Day in RED



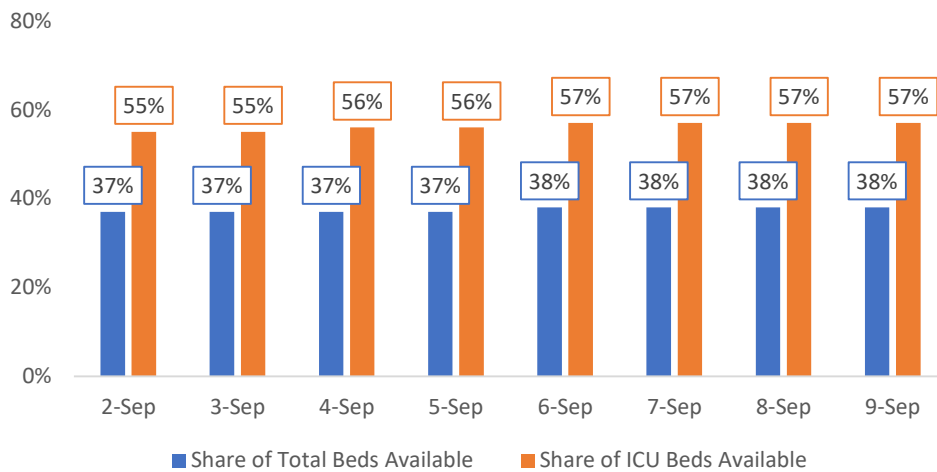
New Hospitalizations per 100k: 7-Day Rolling Avg



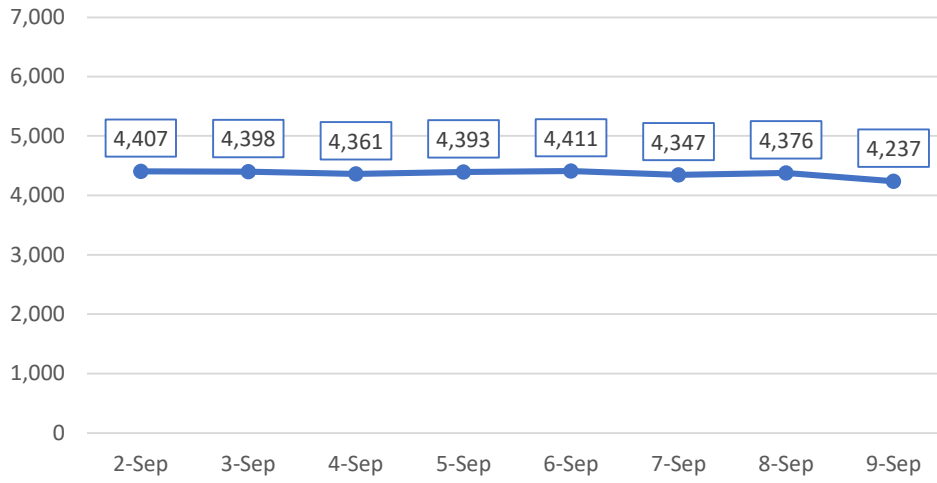
Hospitalizations



Available Hospital Capacity: 7-Day Rolling Avg

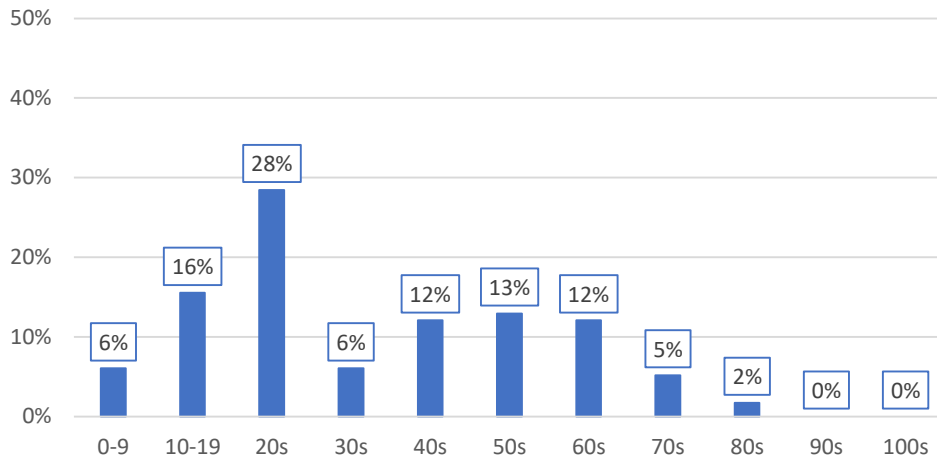


Test Volume: 7-Day Rolling Avg



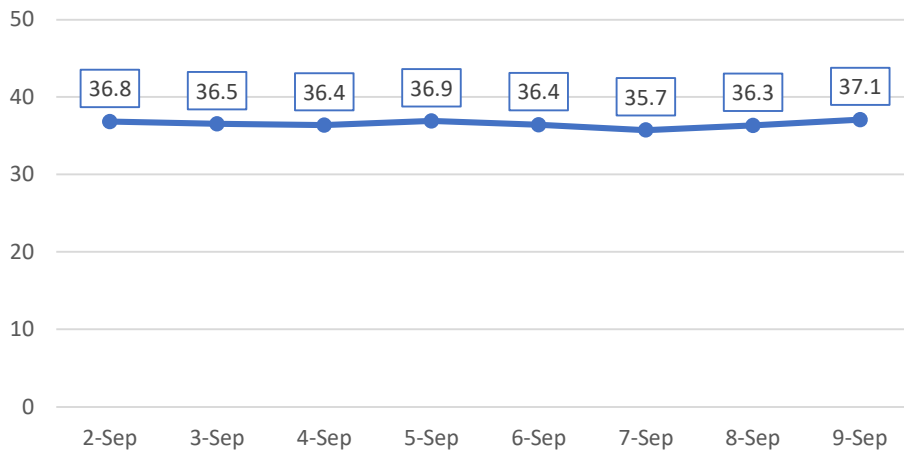
Share of New Positives by Age Group

(Past Seven Days, Monroe County only)



Mean Age of New Positives: 7-Day Rolling Avg

(Monroe County only; Estimated based on 10-year age cohorts)

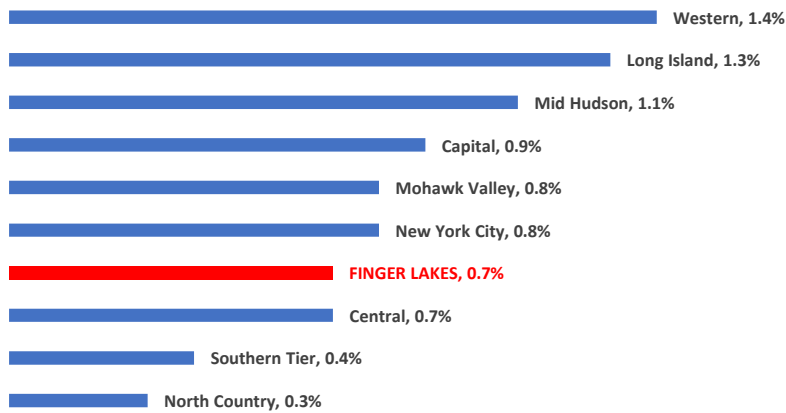


**Week of
August 17th**
0.80%
**reporting
symptoms**
(85k screens)

**Week of
August 24th**
0.72%
**reporting
symptoms**
(83k screens)

Regional Comparison: % Positive Tests

(7-Day Rolling Average)



Regional Comparison: New Cases per 100k

(7-Day Rolling Average)

