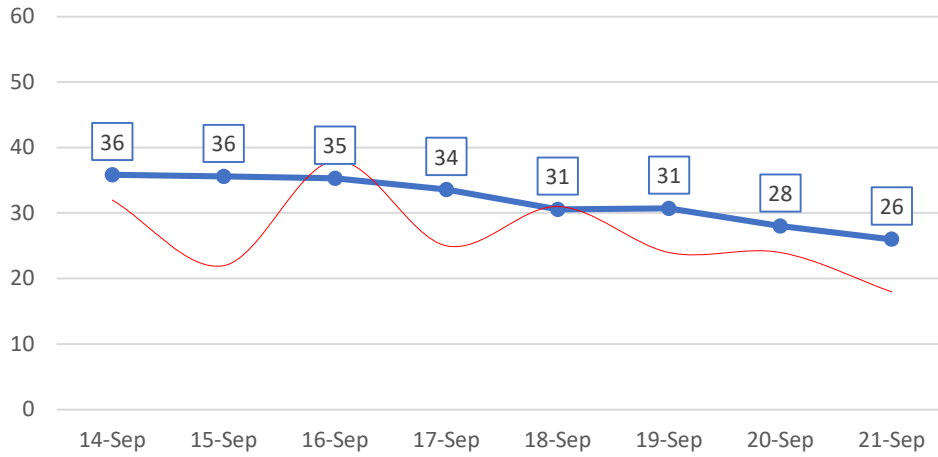
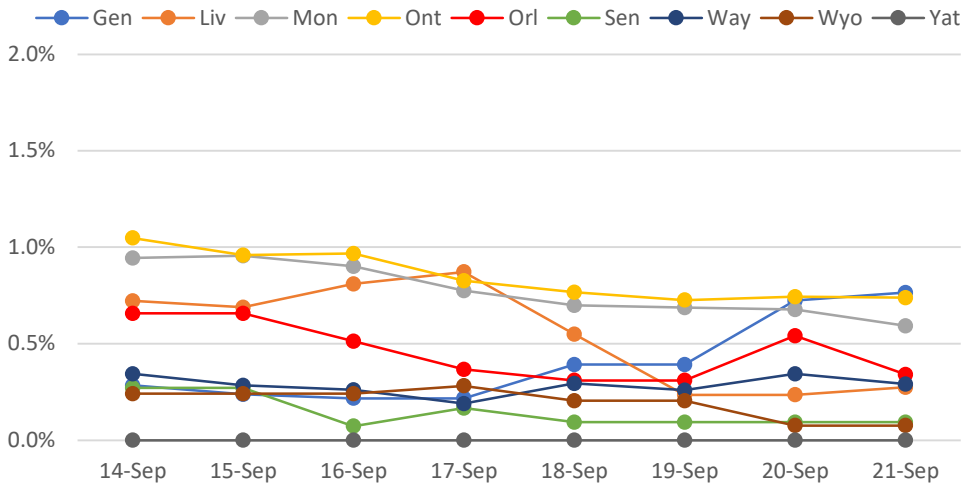


### New Positives: 7-Day Rolling Avg

(Actual Daily Count Shown in Red)

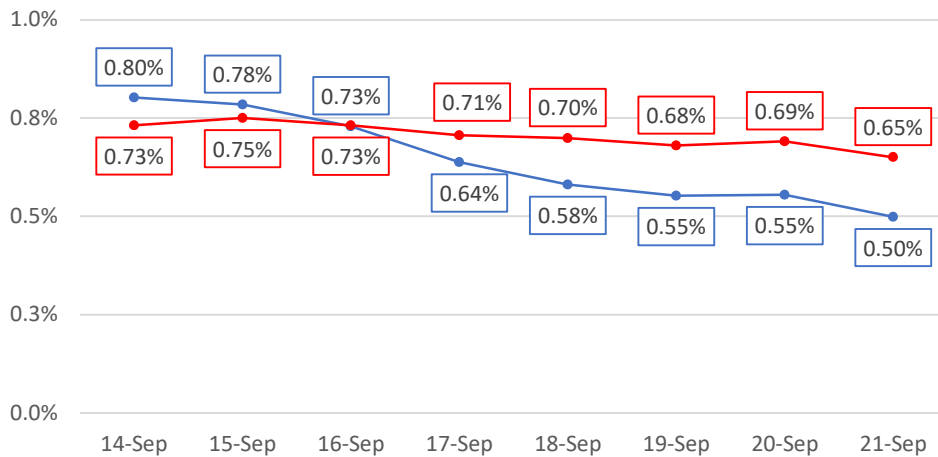


### % New Test Positives: 7-Day Rolling Avg

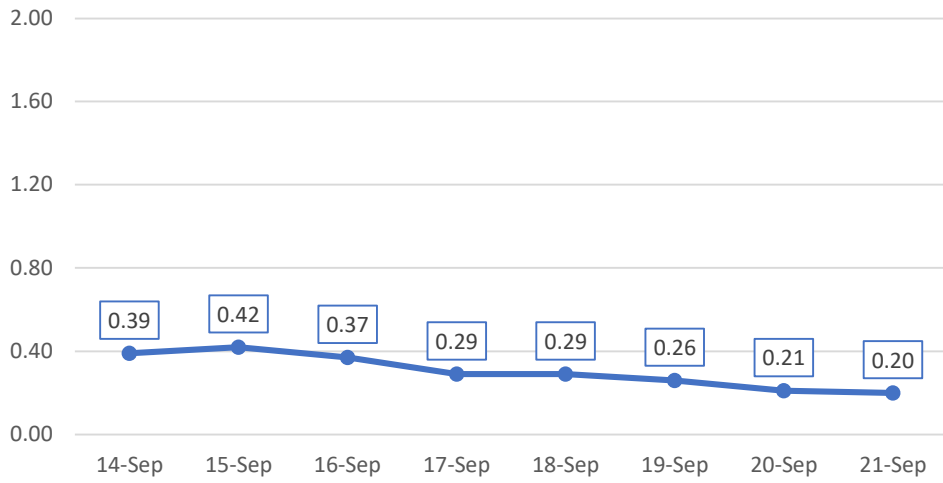


### % New Test Positives: Rolling Avg

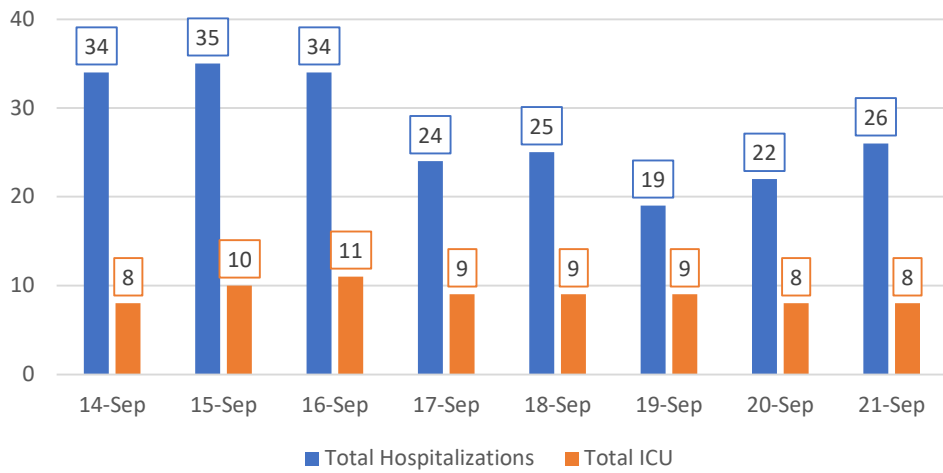
7-Day in BLUE, 14-Day in RED



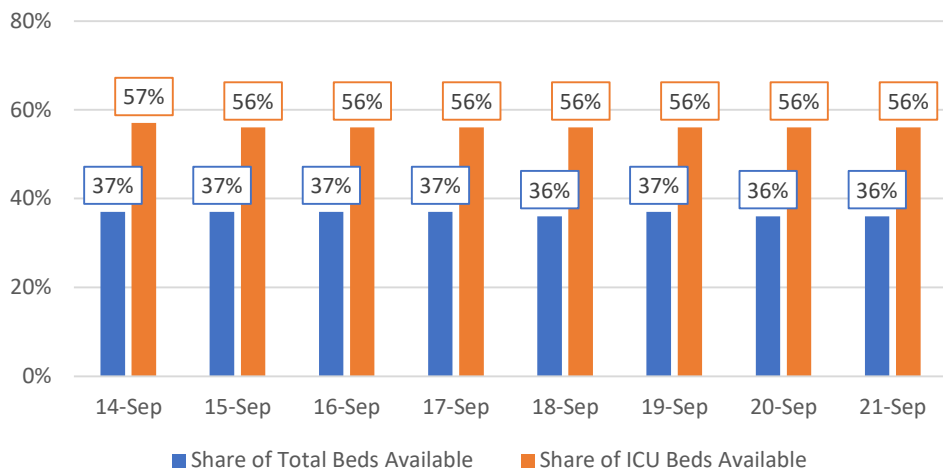
### New Hospitalizations per 100k: 7-Day Rolling Avg



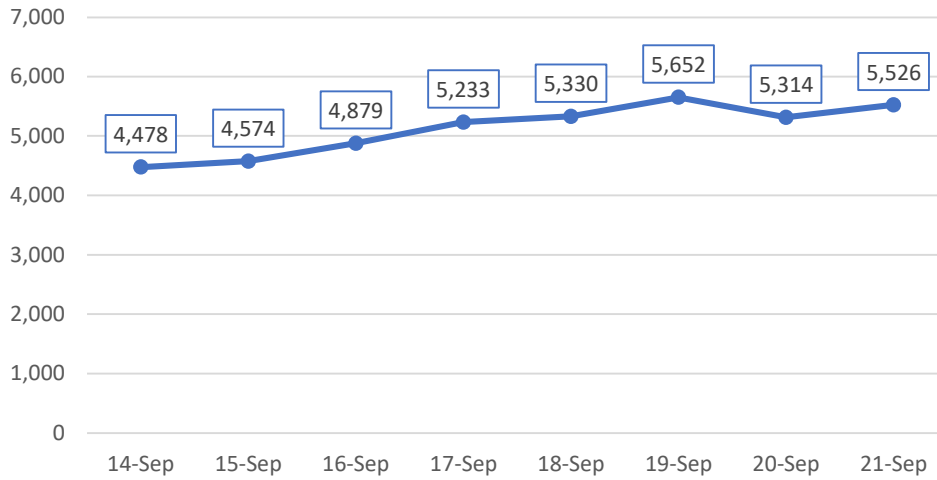
### Hospitalizations



### Available Hospital Capacity: 7-Day Rolling Avg

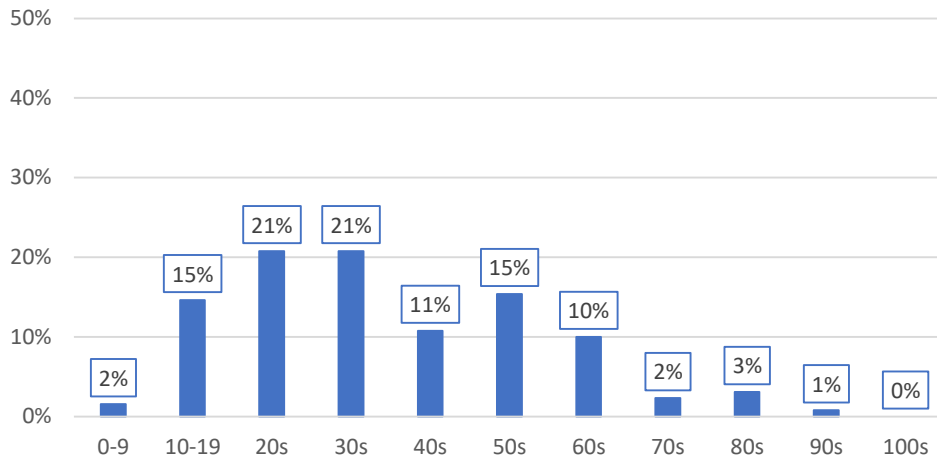


### Test Volume: 7-Day Rolling Avg



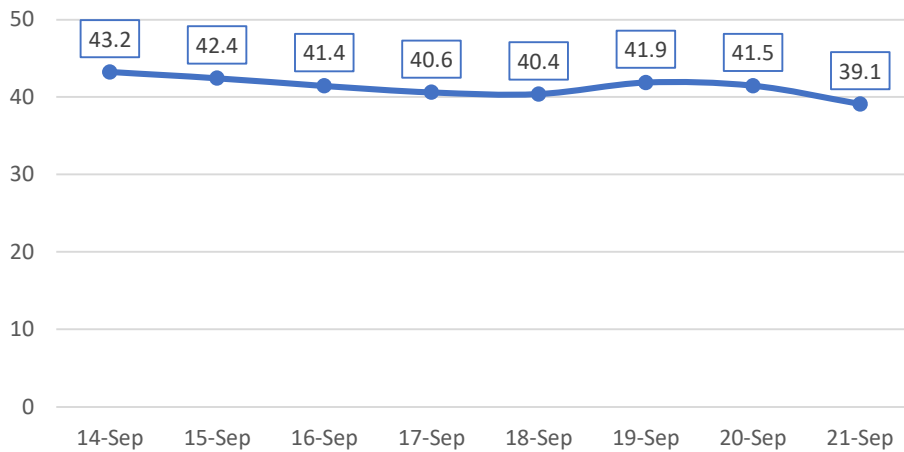
### Share of New Positives by Age Group

(Past Seven Days, Monroe County only)



### Mean Age of New Positives: 7-Day Rolling Avg

(Monroe County only; Estimated based on 10-year age cohorts)



**Week of  
August 31st**

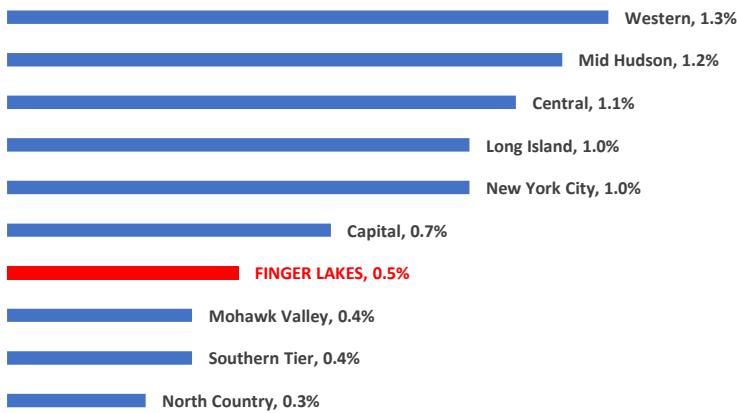
**0.71%**  
reporting  
symptoms  
(82k screens)

**Week of  
September 7th**

**0.71%**  
reporting  
symptoms  
(81k screens)

## Regional Comparison: % Positive Tests

(7-Day Rolling Average)



## Regional Comparison: New Cases per 100k

(7-Day Rolling Average)

