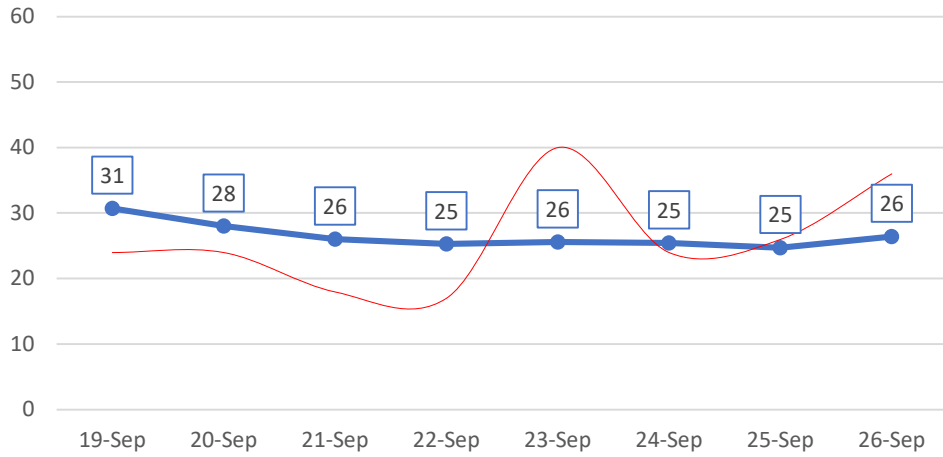
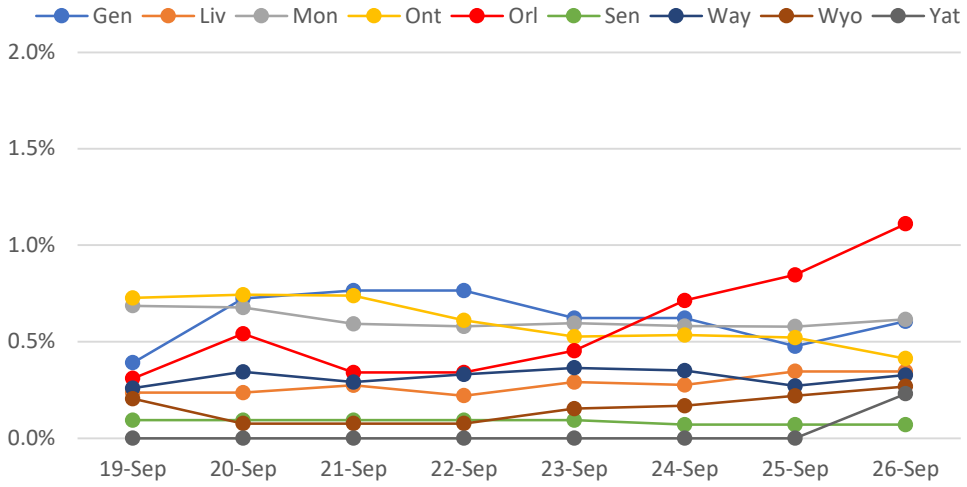


New Positives: 7-Day Rolling Avg

(Actual Daily Count Shown in Red)

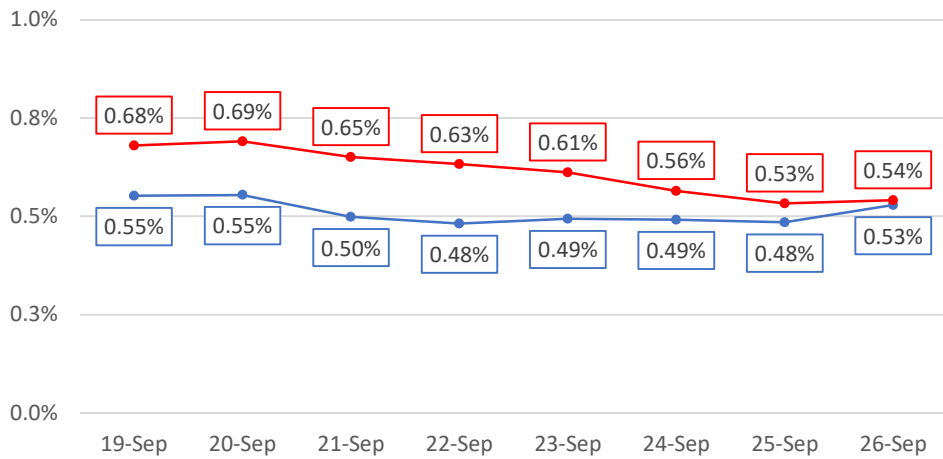


% New Test Positives: 7-Day Rolling Avg

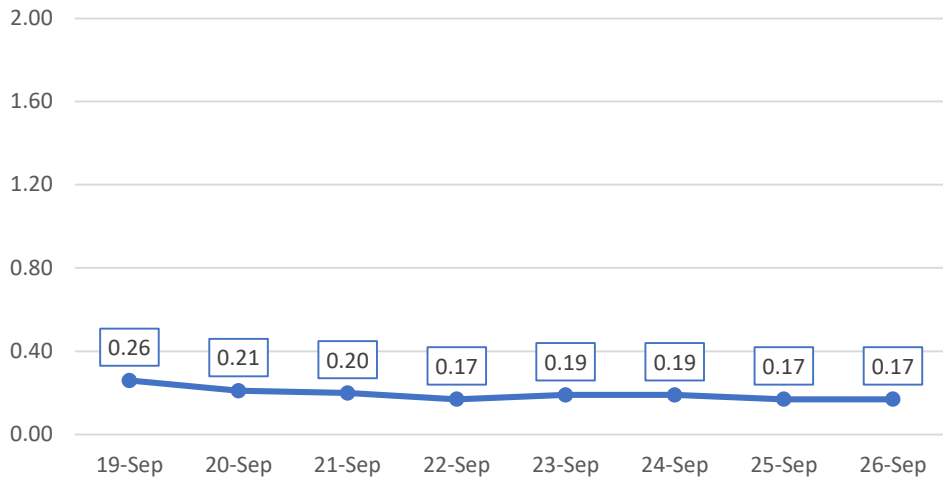


% New Test Positives: Rolling Avg

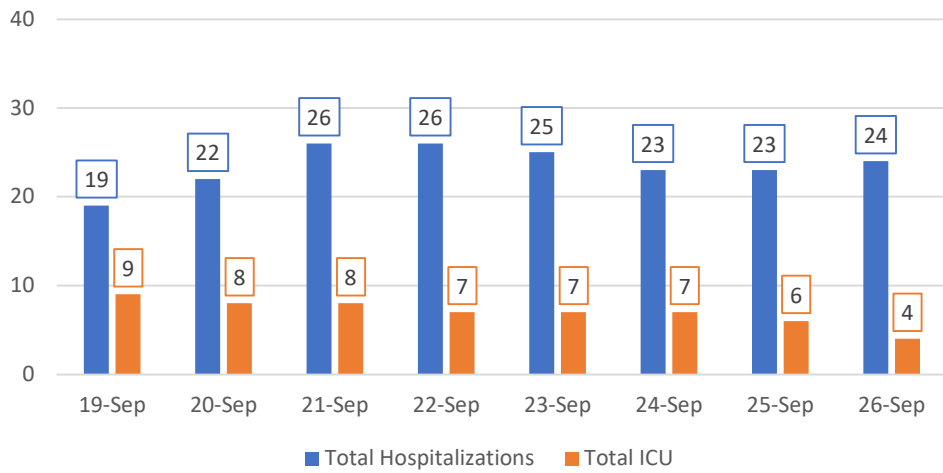
7-Day in BLUE, 14-Day in RED



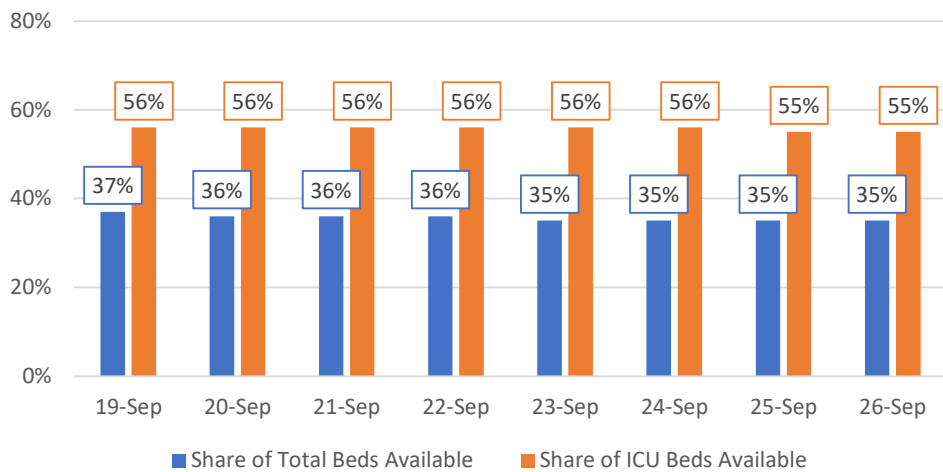
New Hospitalizations per 100k: 7-Day Rolling Avg



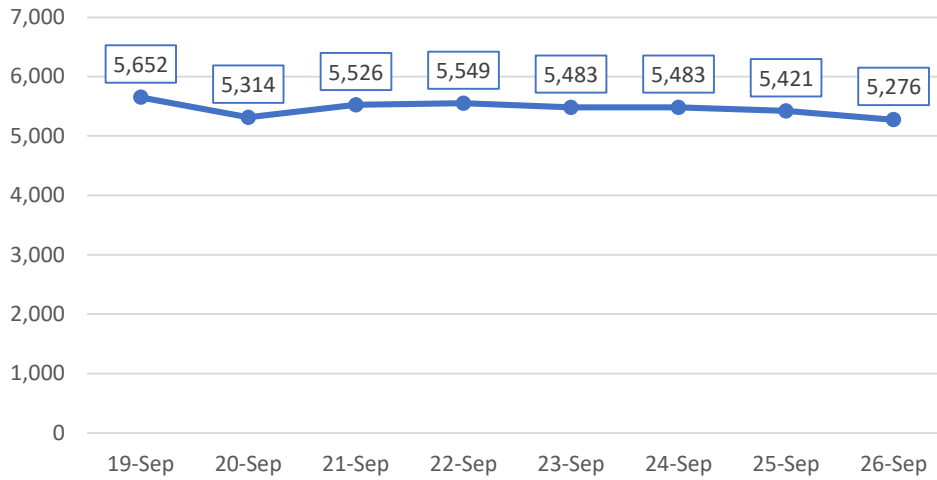
Hospitalizations



Available Hospital Capacity: 7-Day Rolling Avg

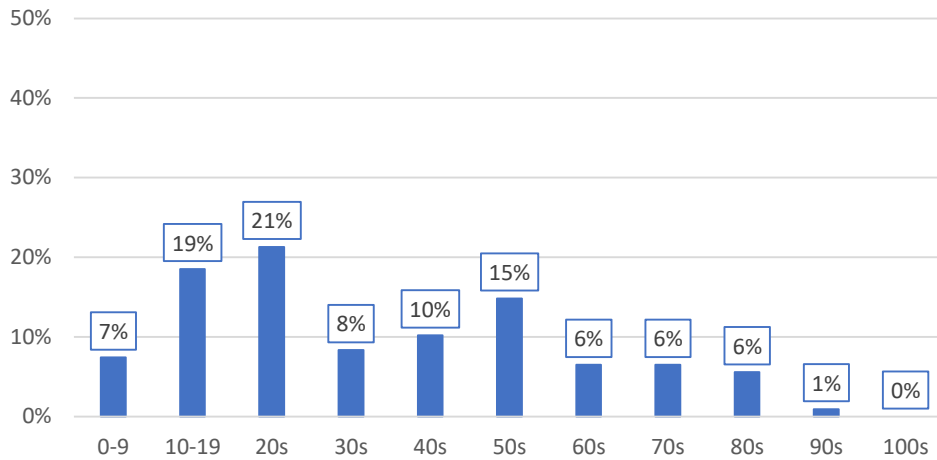


Test Volume: 7-Day Rolling Avg



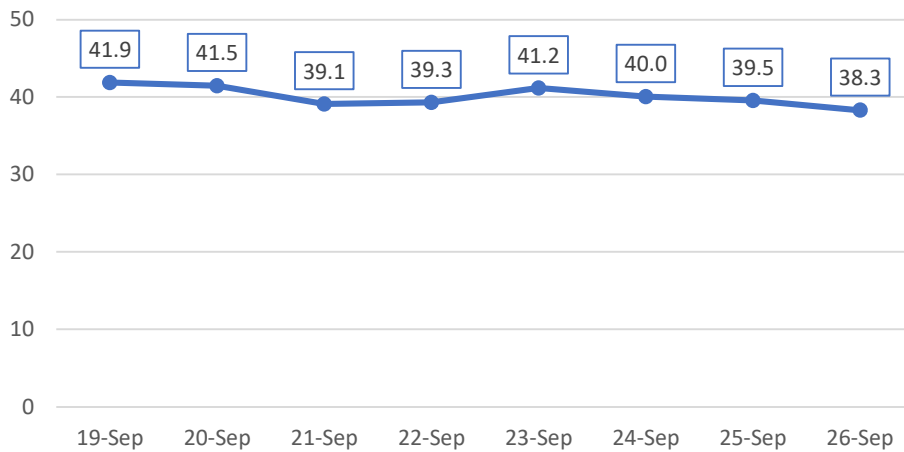
Share of New Positives by Age Group

(Past Seven Days, Monroe County only)



Mean Age of New Positives: 7-Day Rolling Avg

(Monroe County only; Estimated based on 10-year age cohorts)



**Week of
September 7th**

0.50%
reporting
symptoms
(141k screens)

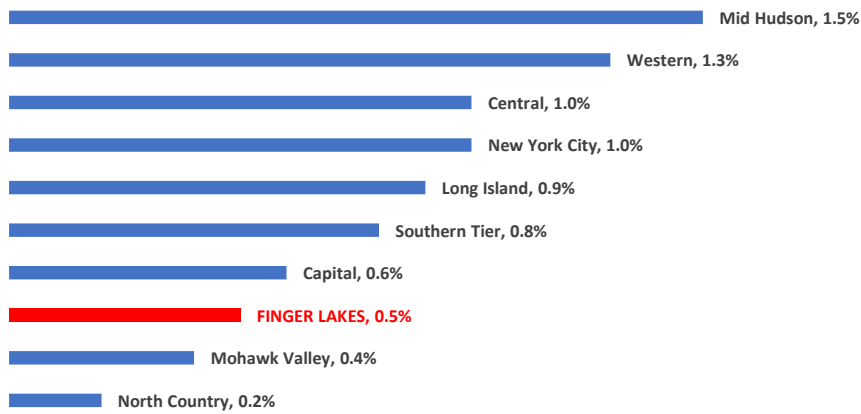
**Week of
September 14th**

0.46%
reporting
symptoms
(135k screens)

Note: ROC-COVID expanded its screening pool the week of September 7th to include data from health care professionals, such that the # of weekly screens increased by approximately 65%.

Regional Comparison: % Positive Tests

(7-Day Rolling Average)



Regional Comparison: New Cases per 100k

(7-Day Rolling Average)

