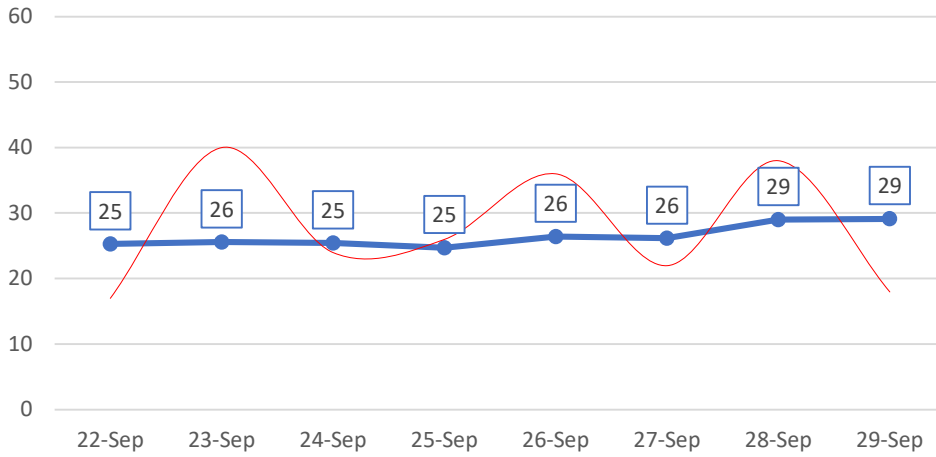
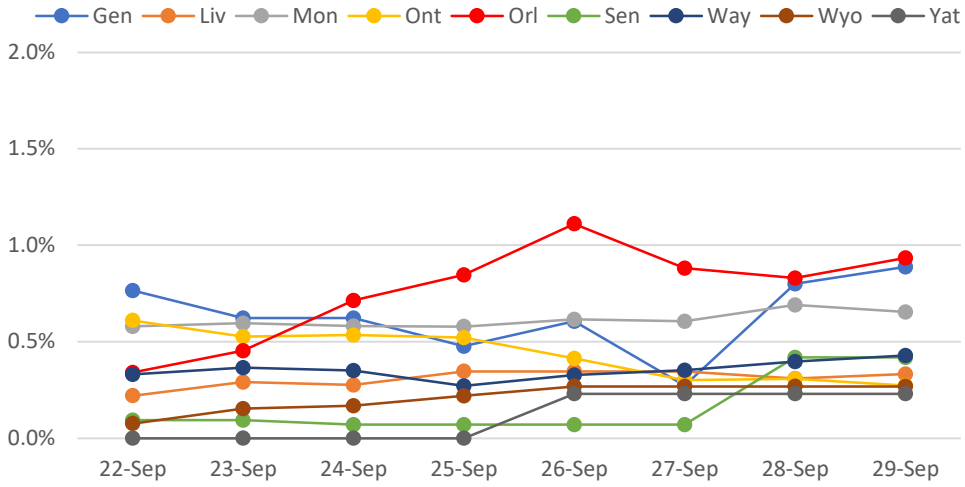


### New Positives: 7-Day Rolling Avg

(Actual Daily Count Shown in Red)

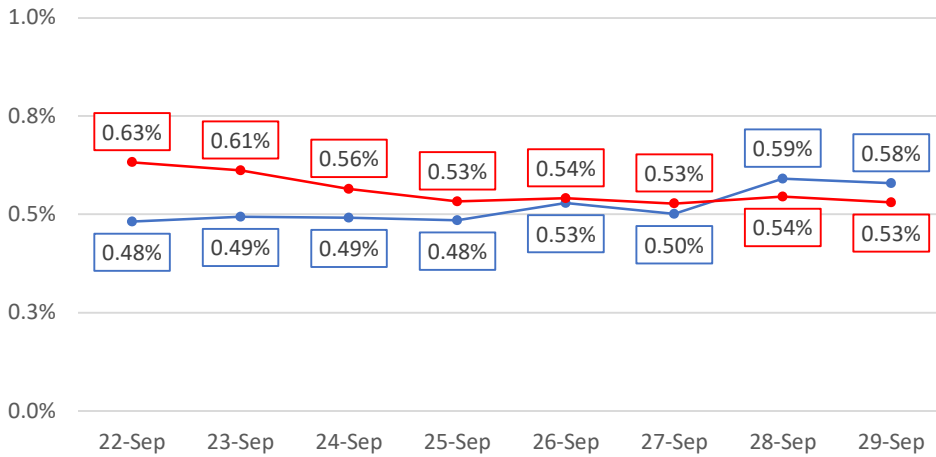


### % New Test Positives: 7-Day Rolling Avg

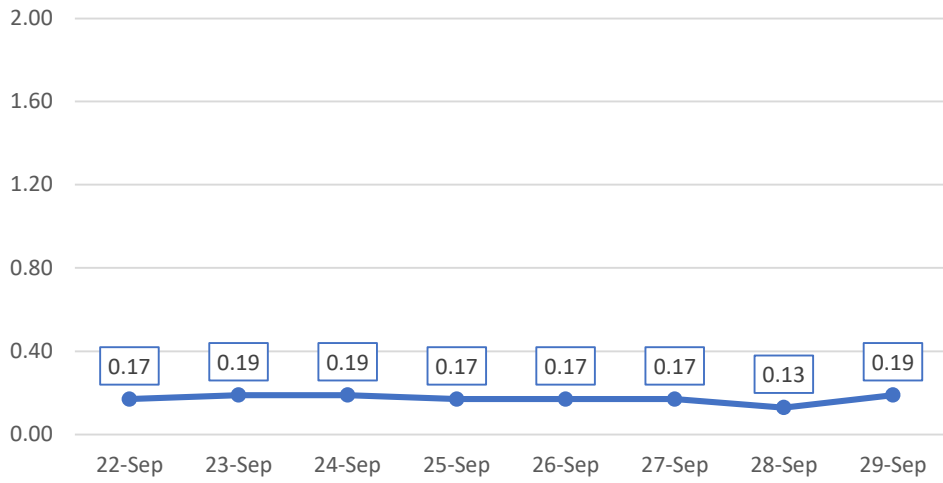


### % New Test Positives: Rolling Avg

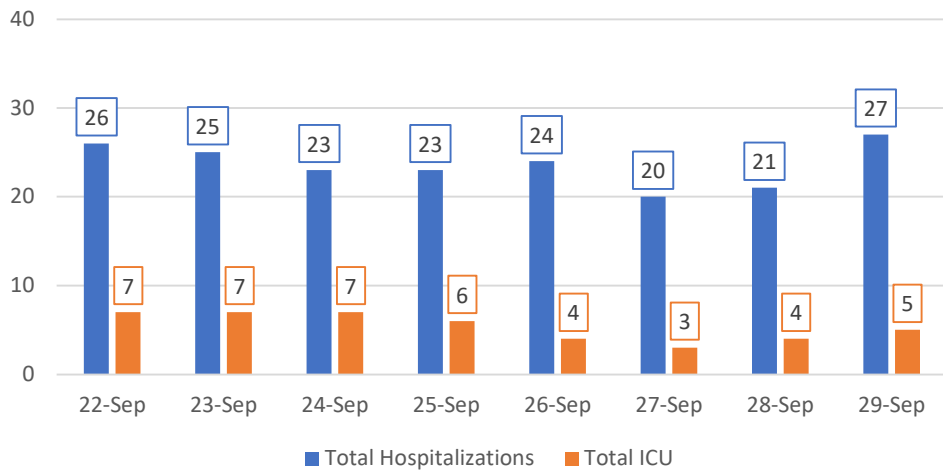
7-Day in BLUE, 14-Day in RED



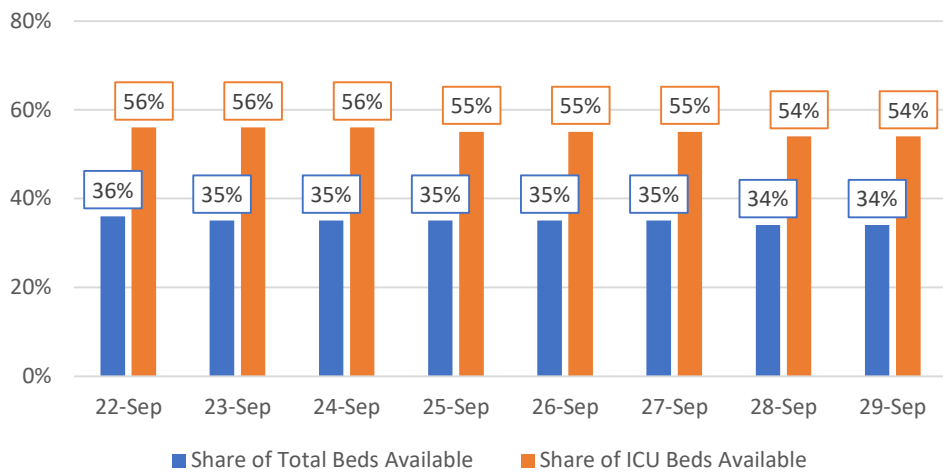
### New Hospitalizations per 100k: 7-Day Rolling Avg



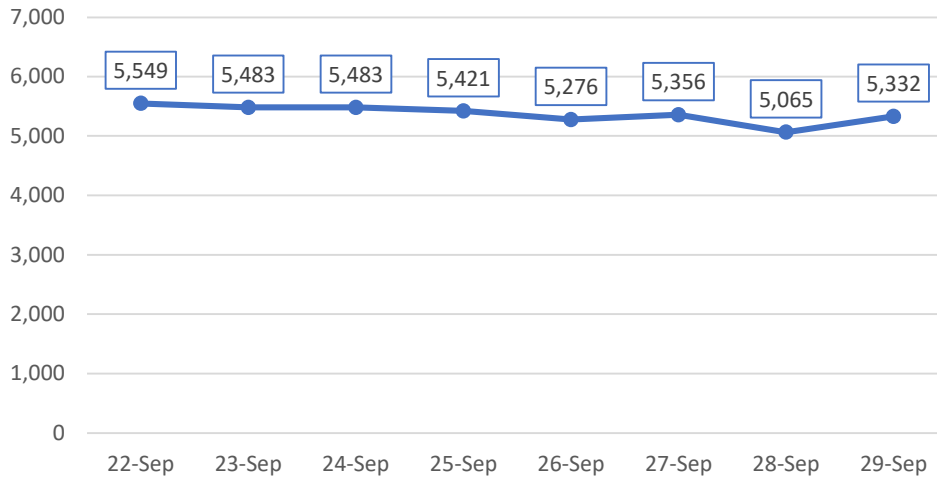
### Hospitalizations



### Available Hospital Capacity: 7-Day Rolling Avg

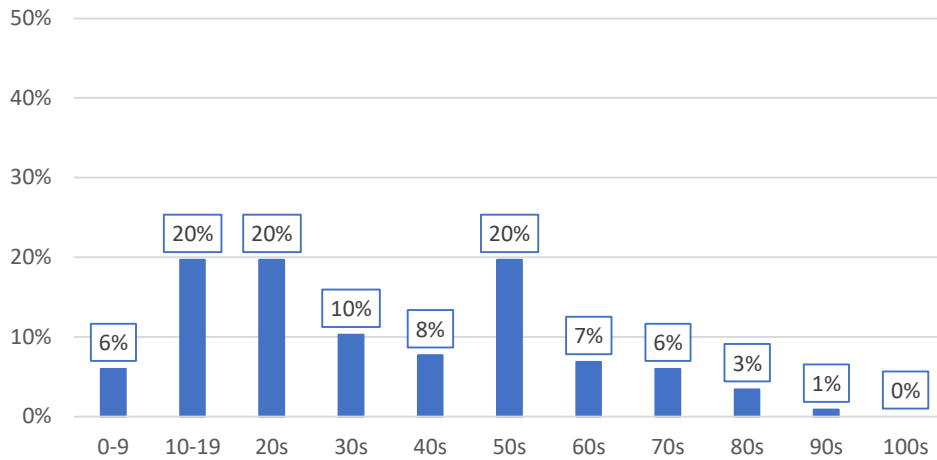


### Test Volume: 7-Day Rolling Avg



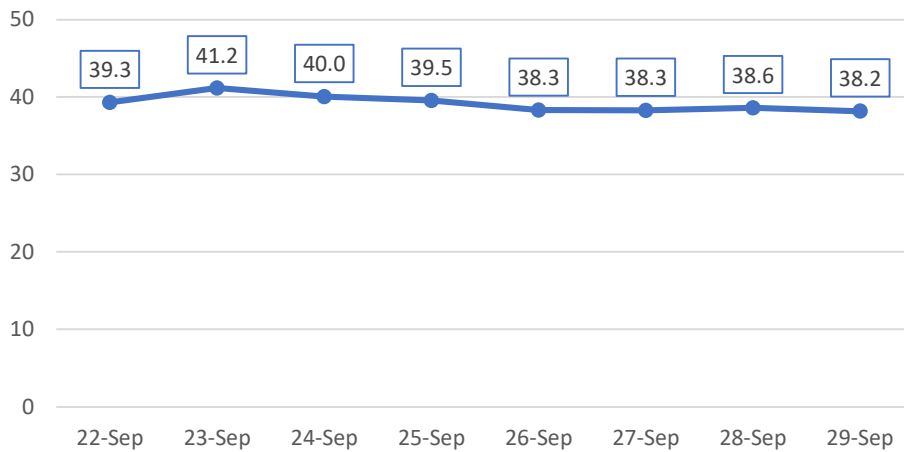
### Share of New Positives by Age Group

(Past Seven Days, Monroe County only)



### Mean Age of New Positives: 7-Day Rolling Avg

(Monroe County only; Estimated based on 10-year age cohorts)



**Week of  
September 14th**

**0.51%**  
reporting  
symptoms  
(150k screens)

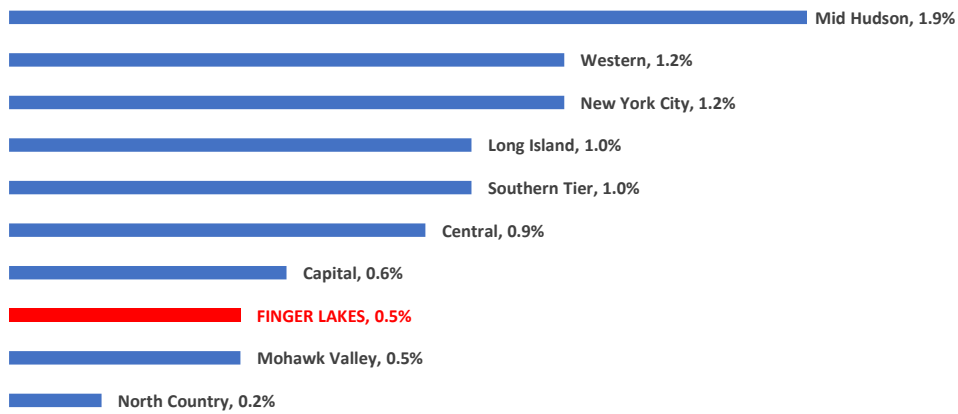
**Week of  
September 21st**

**0.58%**  
reporting  
symptoms  
(147k screens)

**Note:** ROC-COVID expanded its screening pool the week of September 7th to include data from health care professionals, such that the # of weekly screens increased by approximately 65%.

## Regional Comparison: % Positive Tests

(7-Day Rolling Average)



## Regional Comparison: New Cases per 100k

(7-Day Rolling Average)

