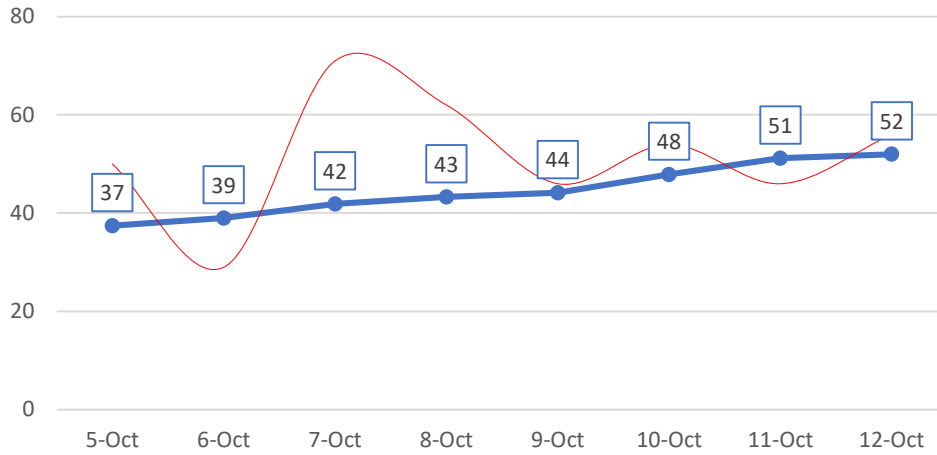
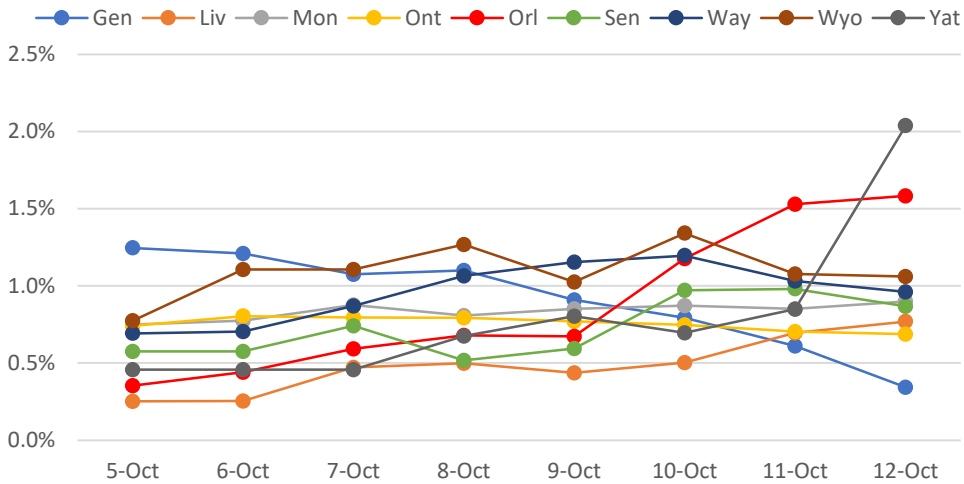


New Positives: 7-Day Rolling Avg

(Actual Daily Count Shown in Red)

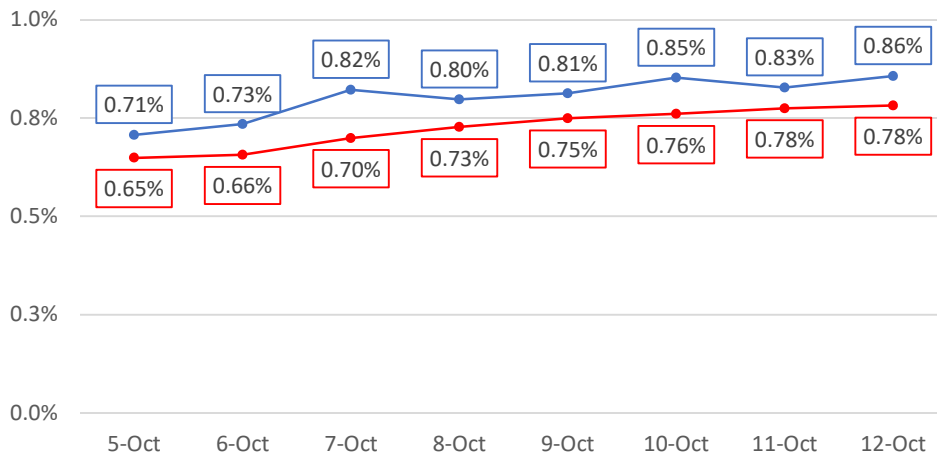


% New Test Positives: 7-Day Rolling Avg

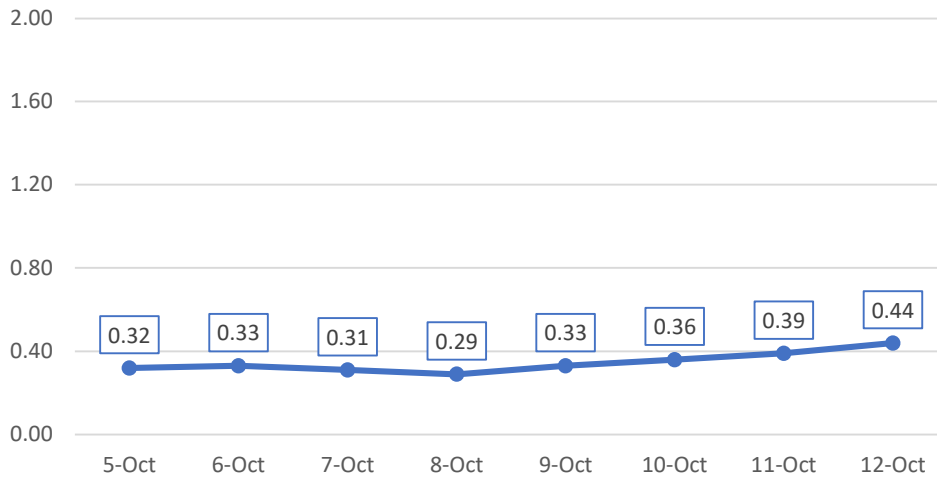


% New Test Positives: Rolling Avg

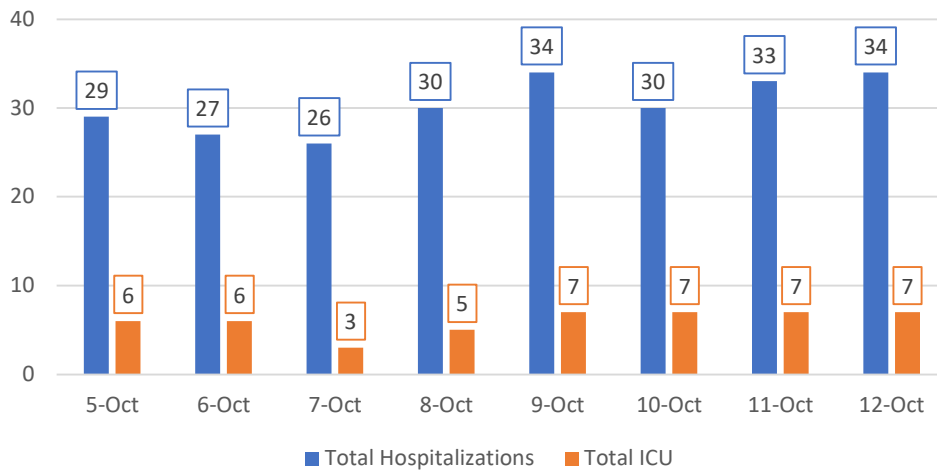
7-Day in BLUE, 14-Day in RED



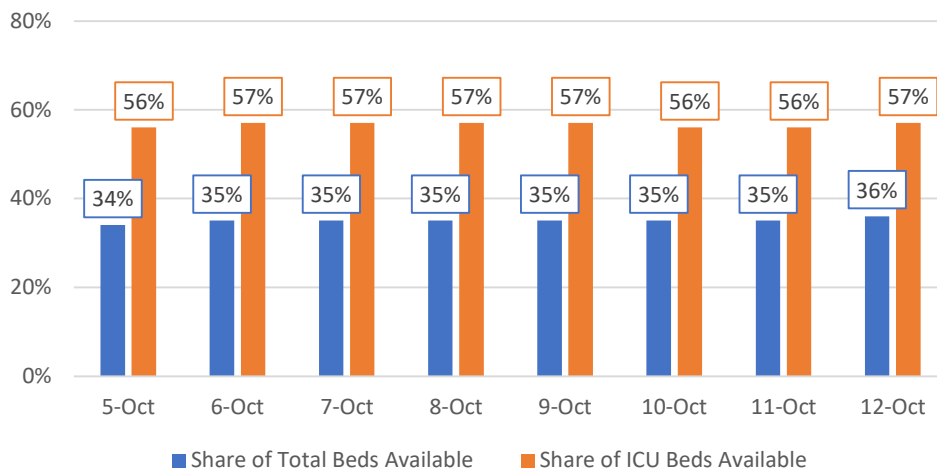
New Hospitalizations per 100k: 7-Day Rolling Avg



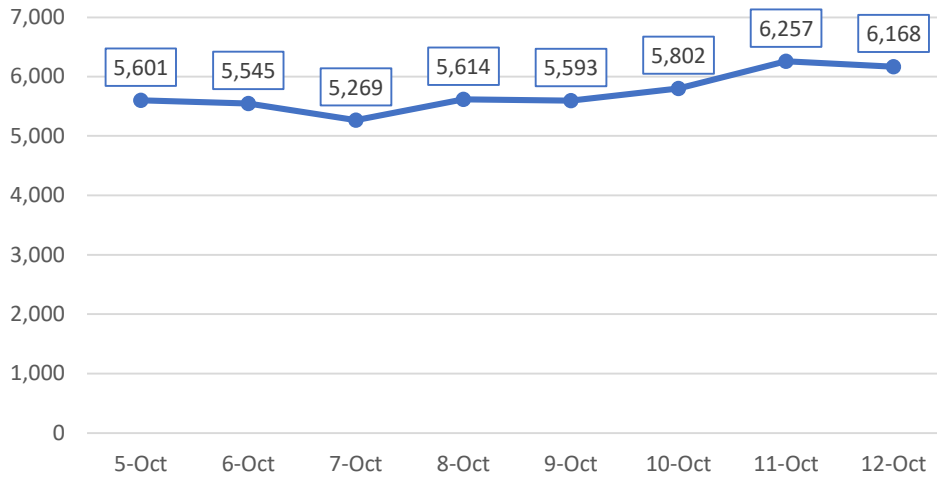
Hospitalizations



Available Hospital Capacity: 7-Day Rolling Avg

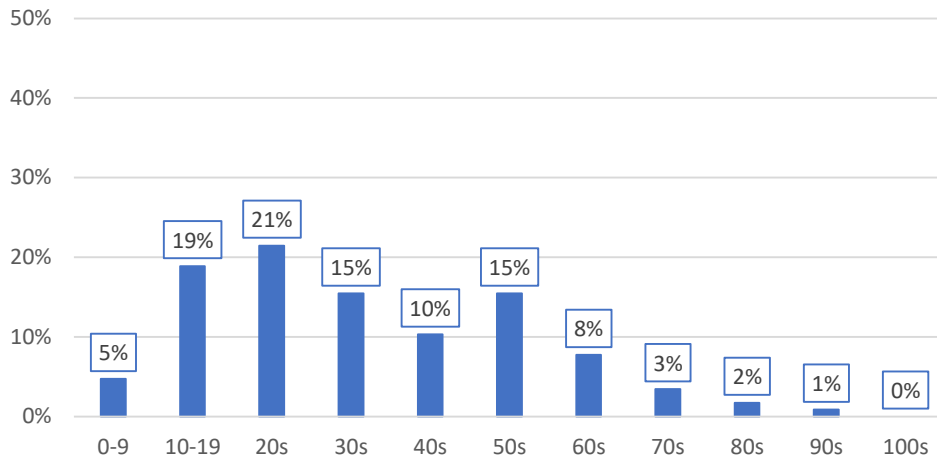


Test Volume: 7-Day Rolling Avg



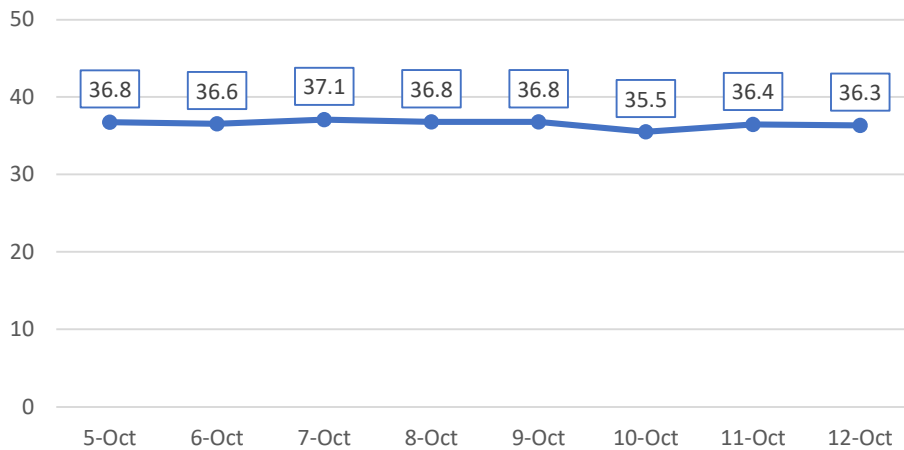
Share of New Positives by Age Group

(Past Seven Days, Monroe County only)



Mean Age of New Positives: 7-Day Rolling Avg

(Monroe County only; Estimated based on 10-year age cohorts)



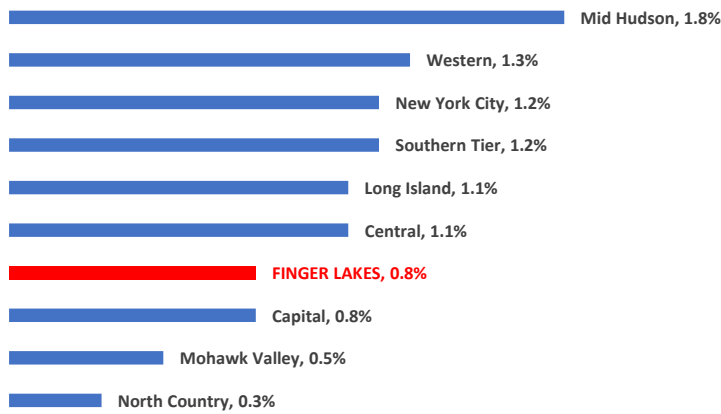
ROC COVID-19

<p>Week of Sept 7th</p> <p>0.50% reporting symptoms</p>	<p>Week of Sept 14th</p> <p>0.51% reporting symptoms</p>	<p>Week of Sept 21st</p> <p>0.58% reporting symptoms</p>	<p>Week of Sept 28th</p> <p>0.61% reporting symptoms</p>	<p>Week of Oct 5th</p> <p>0.68% reporting symptoms</p>
---	--	--	--	--

Note: ROC-COVID expanded its screening pool the week of September 7th to include data from health care professionals, such that the # of weekly screens increased by approximately 65%.

Regional Comparison: % Positive Tests

(7-Day Rolling Average)



Regional Comparison: New Cases per 100k

(7-Day Rolling Average)

