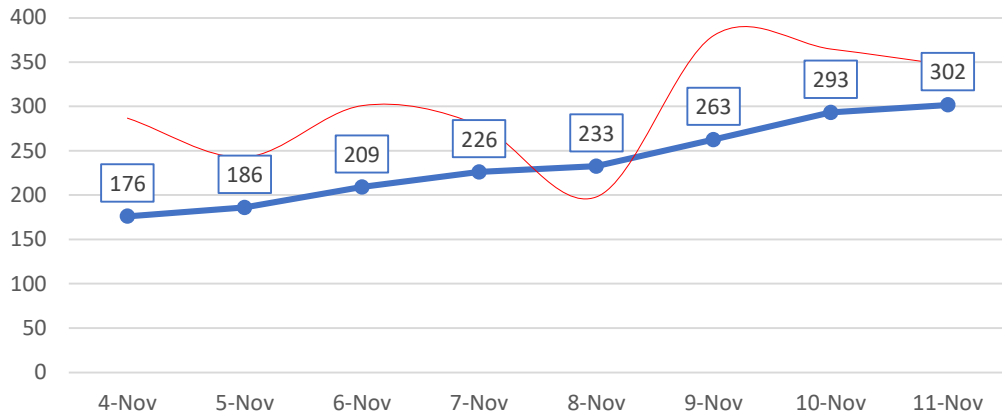


# Finger Lakes Region COVID Data

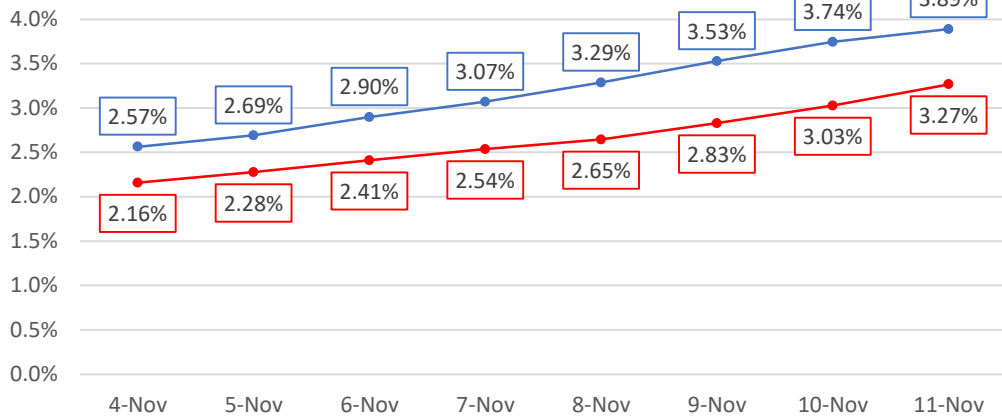
## New Positives: 7-Day Rolling Avg

(Actual Daily Count Shown in Red)

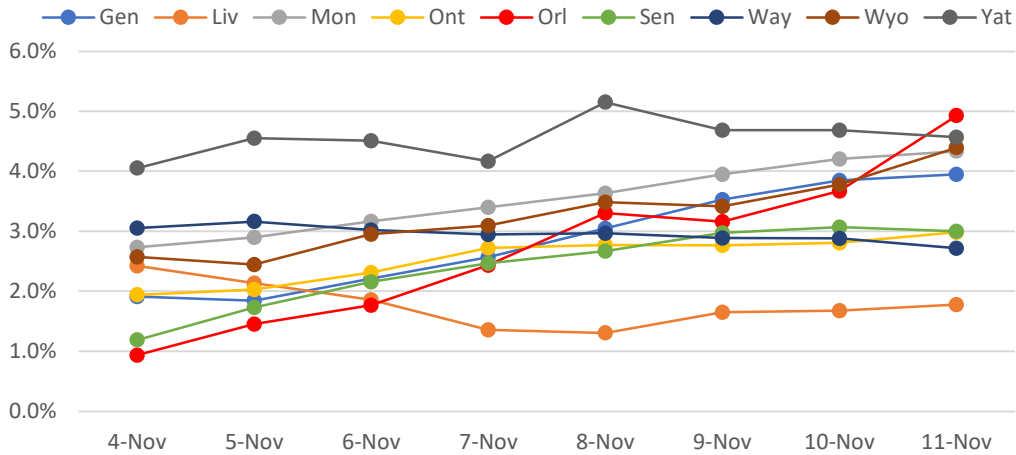


## % New Test Positives: Rolling Avg

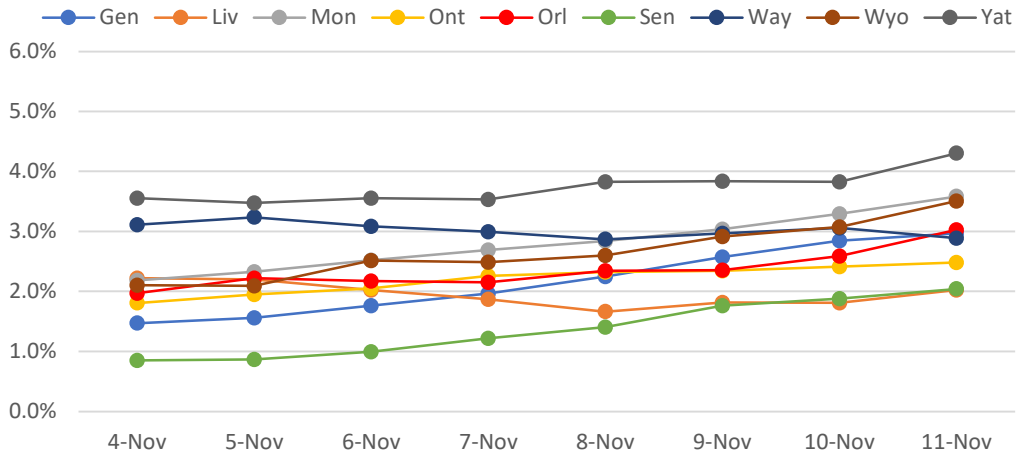
7-Day in BLUE, 14-Day in RED



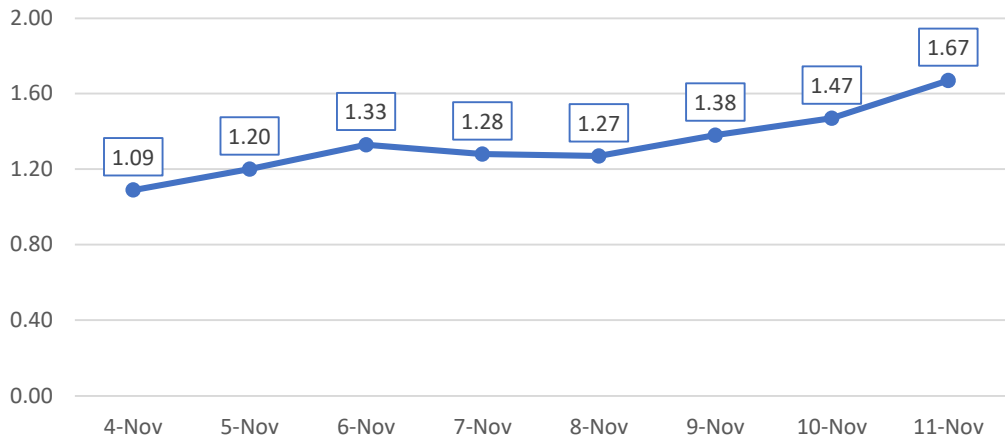
## % New Test Positives: 7-Day Rolling Avg



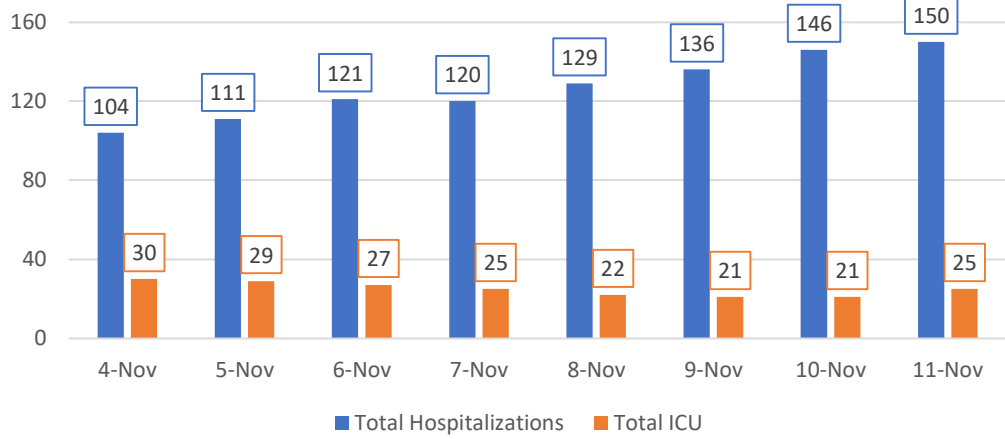
### % New Test Positives: 14-Day Rolling Avg



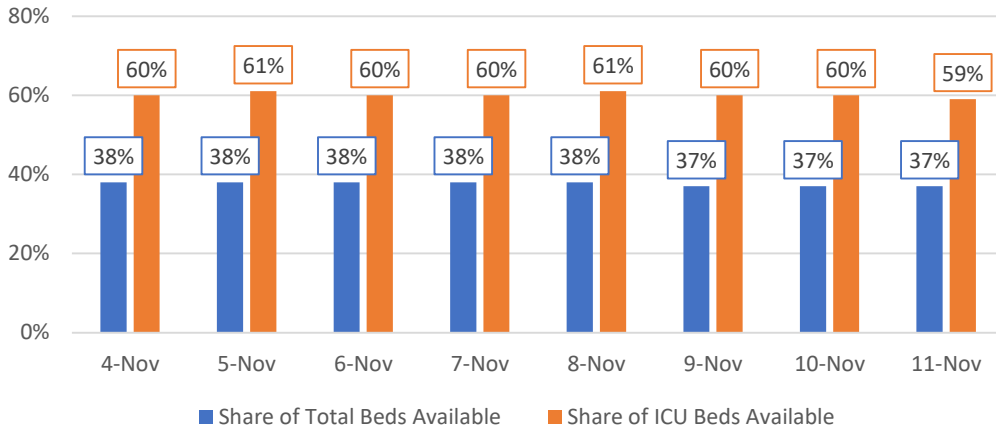
### New Hospitalizations per 100k: 7-Day Rolling Avg



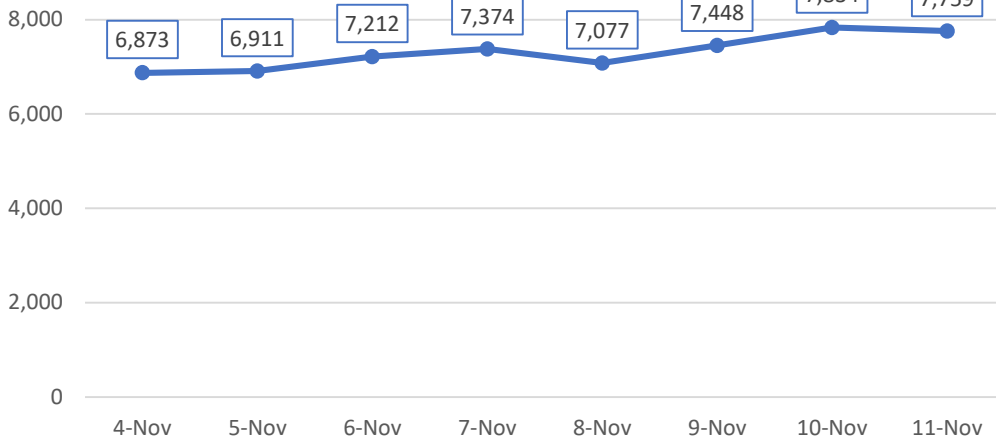
### Hospitalizations



### Available Hospital Capacity: 7-Day Rolling Avg

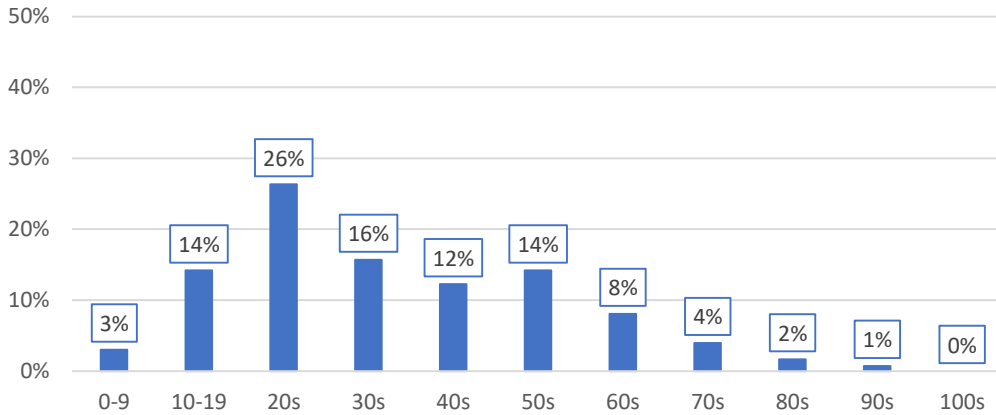


### Test Volume: 7-Day Rolling Avg



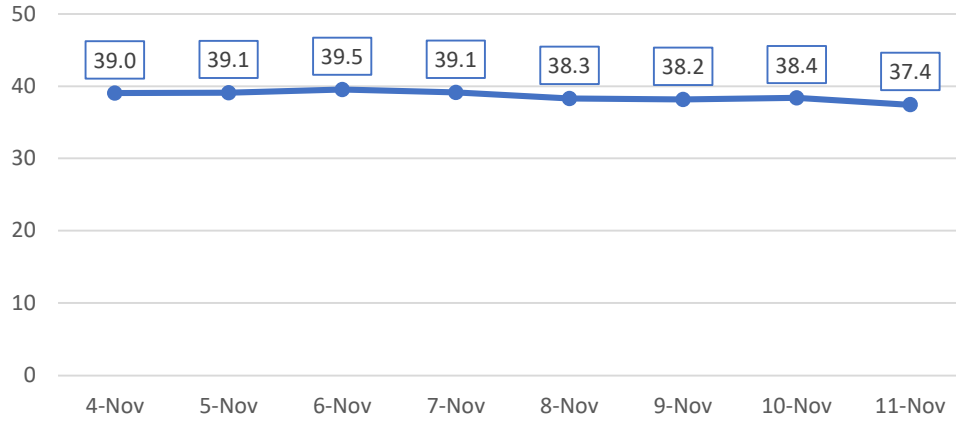
### Share of New Positives by Age Group

(Past Seven Days, Monroe County only)



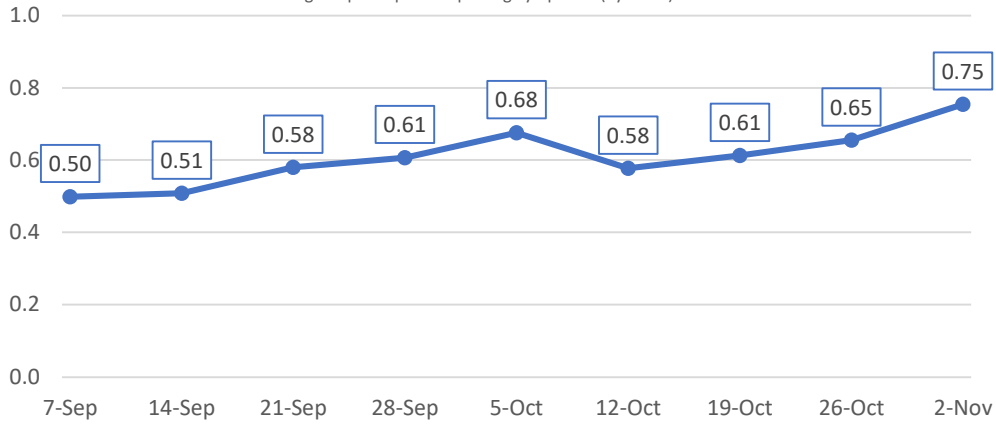
## Mean Age of New Positives: 7-Day Rolling Avg

(Monroe County only; Estimated based on 10-year age cohorts)



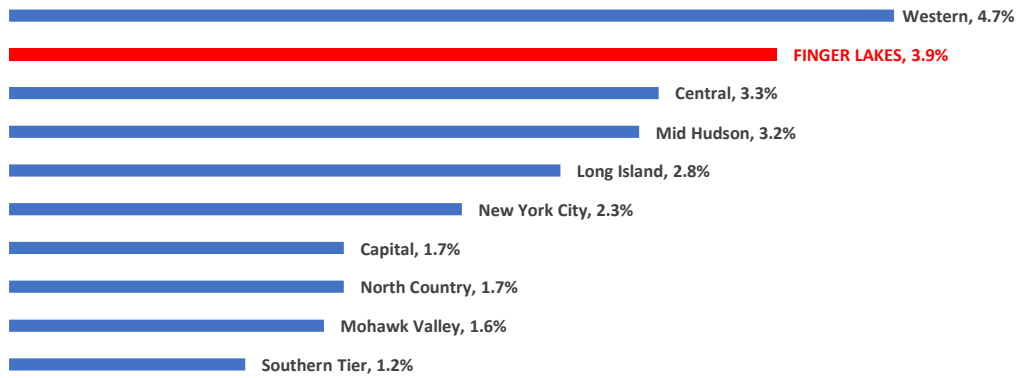
## ROCCOVID-19

Percentage of participants reporting symptoms (by week)



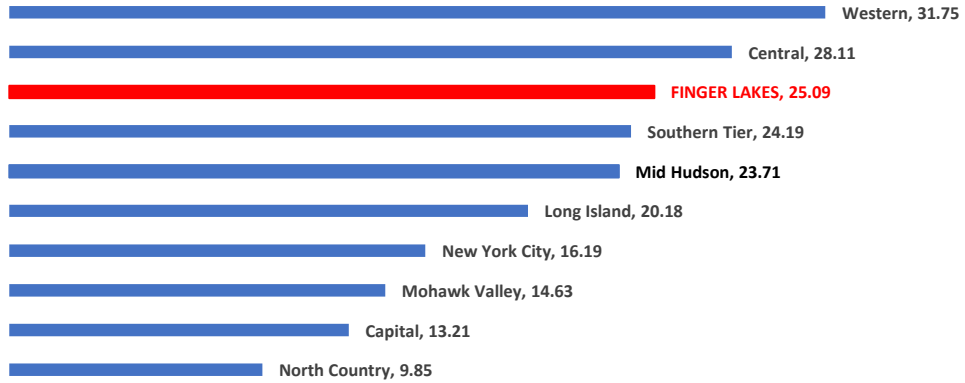
## Regional Comparison: % Positive Tests

(7-Day Rolling Average)



# Regional Comparison: New Cases per 100k

(7-Day Rolling Average)



# Cumulative Cases Since 9/8 in FL Region Schools

Student Positives in BLUE, Teacher Positives in RED

