

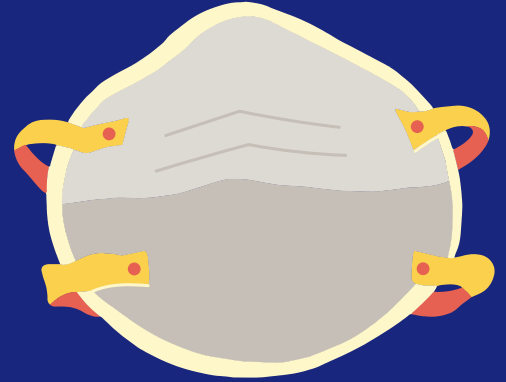
WHAT TYPE OF MASK DO I NEED?



N95 RESPIRATOR

RESERVED FOR HEALTH CARE WORKERS

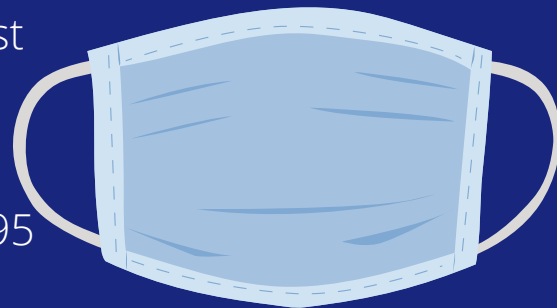
- Filters at least 95% of airborne particles if fitted and worn properly.
- Worn when caring for patients with COVID-19 or performing procedures that put them at high risk for catching the virus.



SURGICAL MASK

RESERVED FOR HEALTH CARE WORKERS AND PATIENTS IN THE HEALTHCARE SETTING

- Typically worn in operating rooms to protect against large droplets. It does not protect against small airborne particles.
- Should be used during patient interaction when N95 masks are not available and discarded after each use.



HOMEMADE MASK OR FACIAL COVERING

SHOULD BE WORN BY THE GENERAL PUBLIC

- It should cover your nose and mouth, make sure you are able to breathe through it.
- Wear it whenever going out in public and wash after use.
- Do not use on children under the age of 2, if you have trouble breathing, or are unable to remove the mask without assistance .

